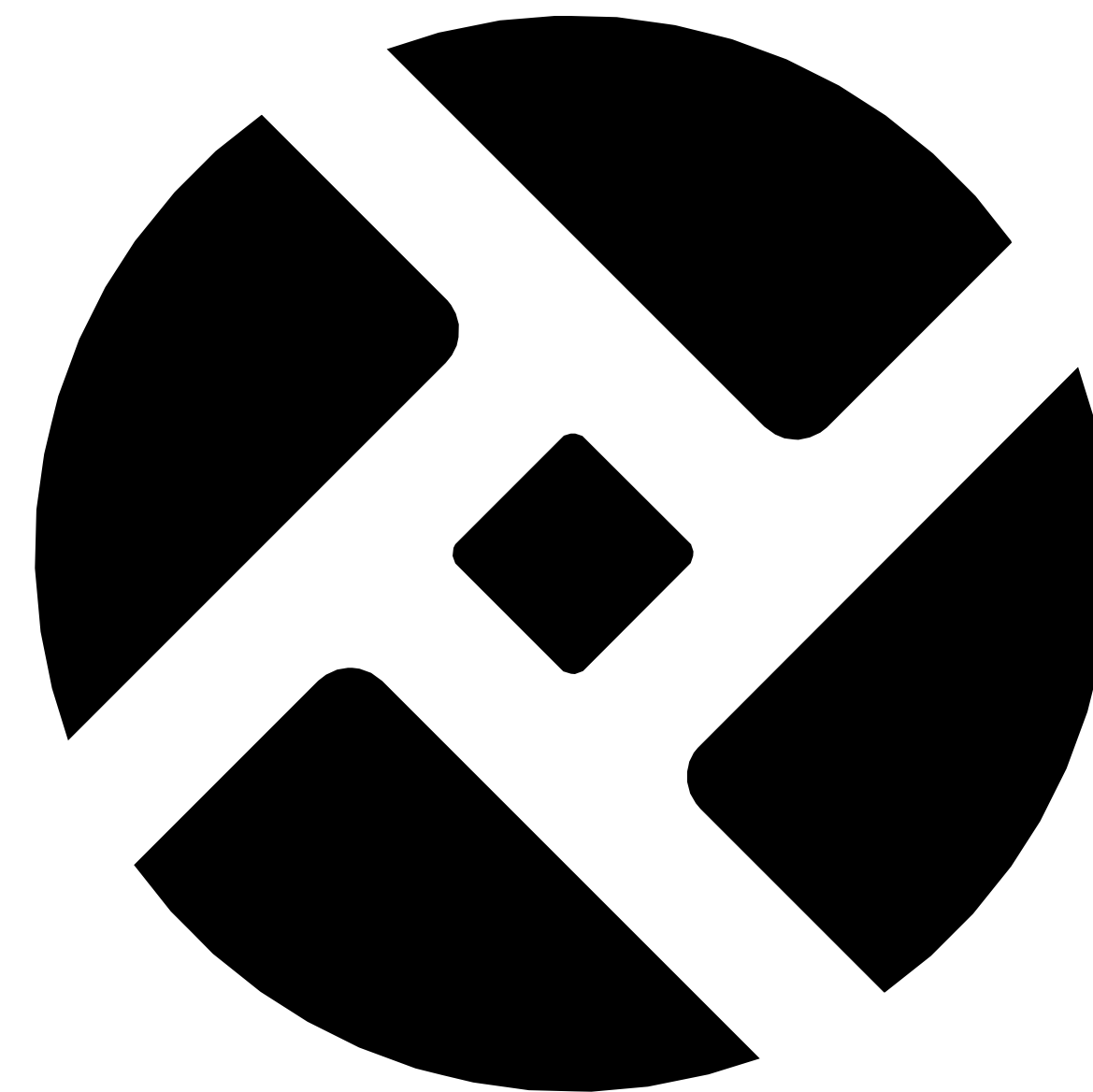


# Port of Portland

THE PORT OF PORTLAND COMMISSION  
ALICE CUPRILL-COMAS - PRESIDENT  
MICHAEL C. ALEXANDER - VICE PRESIDENT  
SEAN O'HOLLAREN - TREASURER  
KATY COBA - SECRETARY  
KATHERINE LAM  
RICHELLE LUTHER  
MEG NIEMI  
KETAN SAMPAT  
STUART STRADER

CURTIS ROBINHOLD, EXECUTIVE DIRECTOR  
DAN PIPPENGER, CHIEF OPERATING OFFICER



**FACILITY NAME**  
**PROJECT NAME**  
**DOCUMENT MILESTONE**  
MONTH YYYY



CAN YOU SEE THE AIRPLANES? THE ADJACENT SAMPLES SHOW THREE DIFFERENT LEVELS OF SHADING. SETTINGS FOR VIEWING AND PRINTING DRAWING CONTENT ARE OPTIMIZED WHEN ALL THREE PLANES ARE VISIBLE. THIS GUIDANCE IS PROVIDED FOR REFERENCE ONLY.

### GENERAL INFORMATION



SHEET NUMBER	DESCRIPTION
A0.00	APPENDIX - TITLEBLOCK GUIDE - REVIT
GI.01	SHEET INDEX
GI.02	CITY DIRECTIVES
GI.03	PORT GRAPHIC STANDARDS
GI.04	PORT GRAPHIC STANDARDS
GI.05	SPACE & ROOM STANDARDS
GI.06	VICINITY MAP

### ARCHITECTURAL

SHEET NUMBER	DESCRIPTION
A2.01	SAMPLE SHEET - PLANS
A3.01	SAMPLE SHEET - ELEVATIONS
A1.01	SAMPLE SHEET - DEMO PLANS
A4.01	SAMPLE SHEET - SECTOR PLANS
A5.01	SAMPLE SHEET - INTERIOR ELEVATIONS
A6.01	SAMPLE SHEET - RCP
A7.01	SAMPLE SHEET - ENLARGED PLANS
A8.01	SAMPLE SHEET - EXTERIOR DETAILS
A9.01	SAMPLE SHEET - INTERIOR DETAILS

### REQUIREMENT LEVEL

THE CONTENTS OF THIS DOCUMENT FALL INTO 4 DIFFERENT CATEGORIES.



**SAMPLE** PANTONE VALUE: 361 C

CONTENT IS INTENDED FOR DEMONSTRATION PURPOSES ONLY. IT IS NOT ENFORCED AS A STANDARD.



**REFERENCE** PANTONE VALUE: Process Blue C

CONTENT IS ONLY PROVIDED FOR REFERENCE, AND IS NOT REQUIRED TO BE USED. OTHER NON-PORT PROVIDED CONTENT MAY BE USED INSTEAD.



**INFORMATION REQUIRED** PANTONE VALUE: 123 C

CONTENT IS PROVIDED FOR REFERENCE, BUT THE USE OF CERTAIN INFORMATION AND/OR PARAMETERS IS REQUIRED.




**REQUIRED** PANTONE VALUE: 193 C

THE USE OF THE SPECIFIC PROVIDED CONTENT IS REQUIRED.



NO.	DATE	BY	REVISIONS	NO.	DATE	BY	REVISIONS


**PORT OF PORTLAND**  
*Possibilities in every direction since 1891.*

2022ZGEN  
DESIGN NUMBER

PROJECT NUMBER

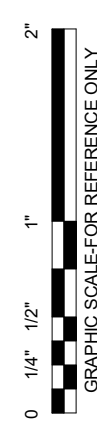
FACILITY NAME	AMANDA COLEMAN
PROJECT NAME	Designer
SHEET INDEX	Author
	Checker
	MONTH YYYY
SHEET NO.	TYPE AA
DRAWING NO.	DISC. SHT. NO.
PDX YYYY-####	GI.01



BLANK SHEET FOR  
CITY OF PORTLAND  
REVIEW



CAN YOU SEE THE AIRPLANES? THE ADJACENT SAMPLES SHOW THREE DIFFERENT LEVELS OF SHADING. SETTINGS FOR VIEWING AND PRINTING DRAWING CONTENT ARE OPTIMIZED WHEN ALL THREE PLANES ARE VISIBLE. THIS GUIDANCE IS PROVIDED FOR REFERENCE ONLY.



FACILITY NAME  
PROJECT NAME  
CITY DIRECTIVES

SUBMITTED BY	AMANDA COLEMAN
DESIGNED BY	A. SHORT
DRAWN BY	A. SHORT
CHECKED BY	D. KEARNS
DATE	MONTH YYYY
SHEET NO.	TYPE AA
DRAWING NO.	DISC. SHT. NO.
PDX YYYY-####	GI.02

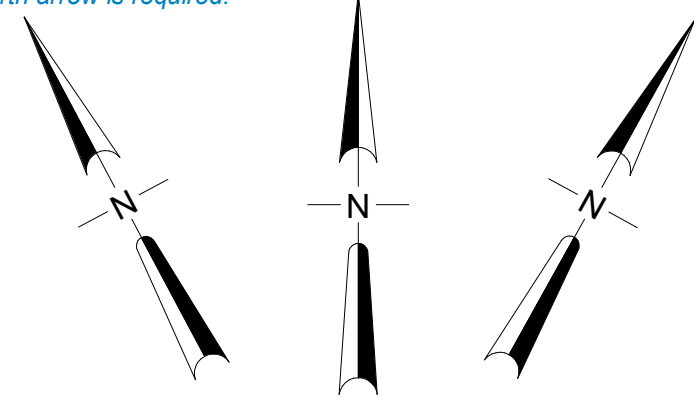
2022ZGEN  
DESIGN NUMBER

####  
PROJECT NUMBER

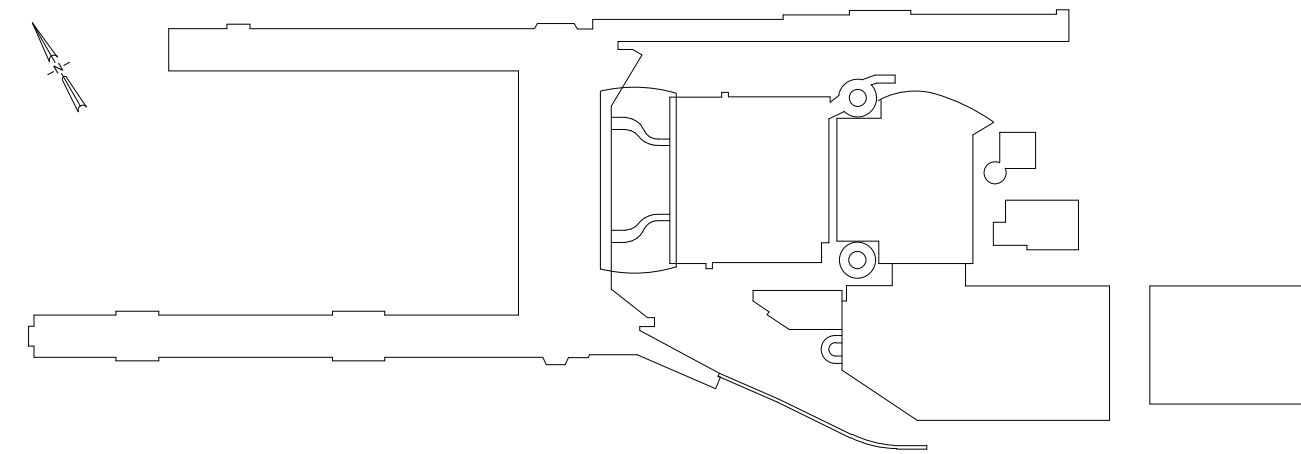
CAN YOU SEE THE AIRPLANES? THE ADJACENT SAMPLES SHOW THREE DIFFERENT LEVELS OF SHADING. SETTINGS FOR VIEWING AND PRINTING DRAWING CONTENT ARE OPTIMIZED WHEN ALL THREE PLANES ARE VISIBLE. THIS GUIDANCE IS PROVIDED FOR REFERENCE ONLY.

**NORTH ARROW** **REQUIRED**

If multiple plan views are on a sheet and they have the same orientation, only one north arrow is required.

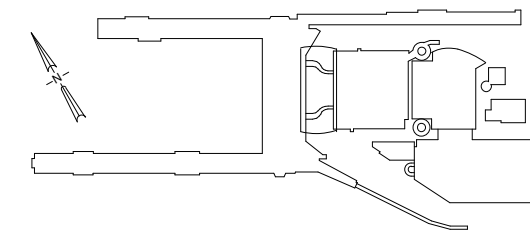


**KEY PLAN** **REFERENCE**



**MINI KEY PLAN** **REFERENCE**

USED ON 11 X 17 SHEET



**TEXT STYLE STANDARDS** **SAMPLE**

**Arial Black (-188) 3/16**

Arial (.165) 21/128

Arial (.125) 1/8

Arial (.094) 3/32

Arial (.063) 1/16

*internal notes*

**BAR SCALES** **REQUIRED**

If multiple scaled views are on a sheet and they have the same scale value, only one bar scale is required.

SCALE: 6" - 1'-0"



SCALE: IN FEET

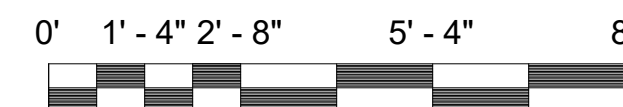
*DO NOT EDIT. LEAVE AS SHOWN*

SCALE: 1" - 1'-0"



SCALE: IN FEET

SCALE: 3/8" - 1'-0"



SCALE: IN FEET

SCALE: 1/8" - 1'-0"



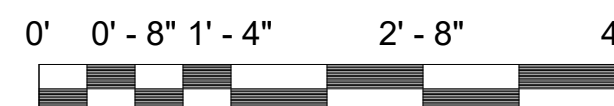
SCALE: IN FEET

SCALE: 3" - 1'-0"



SCALE: IN FEET

SCALE: 3/4" - 1'-0"



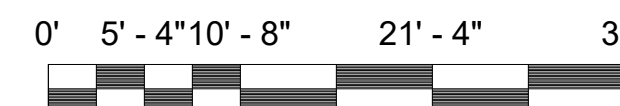
SCALE: IN FEET

SCALE: 1/4" - 1'-0"



SCALE: IN FEET

SCALE: 3/32" - 1'-0"



SCALE: IN FEET

SCALE: 1-1/2" - 1'-0"



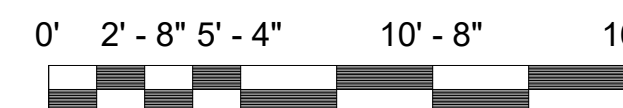
SCALE: IN FEET

SCALE: 1/2" - 1'-0"



SCALE: IN FEET

SCALE: 3/16" - 1'-0"



SCALE: IN FEET

SCALE: 1/16" - 1'-0"



SCALE: IN FEET

**NOTES**



The plural format "NOTES" is used for both single and multiple notes

- SEE ELECTRICAL DRAWINGS FOR RELOCATION OR REMOVAL OF EXISTING SIGN PADS AND LOCATION OF NEW SIGNS
- NOTE TWO
- FOR ADJACENT GEOMETRY TO THE EAST, SEE SHEET C1.04.

**KEYNOTES**



KEYNOTES SCHEDULES SHOULD ADHERE TO SECTION 4.5.2.3 OF THE PORT'S BIM STANDARDS DOCUMENT.

- 12 EXISTING TO REMAIN
- 0458 REMOVE EXISTING FLOOR COVERING
- 705.2 PASSENGER BOARDING BRIDGE
- C62 EXISTING TO REMAIN. MAINTAIN EXISTING CIRCUITING AND CONTROL.

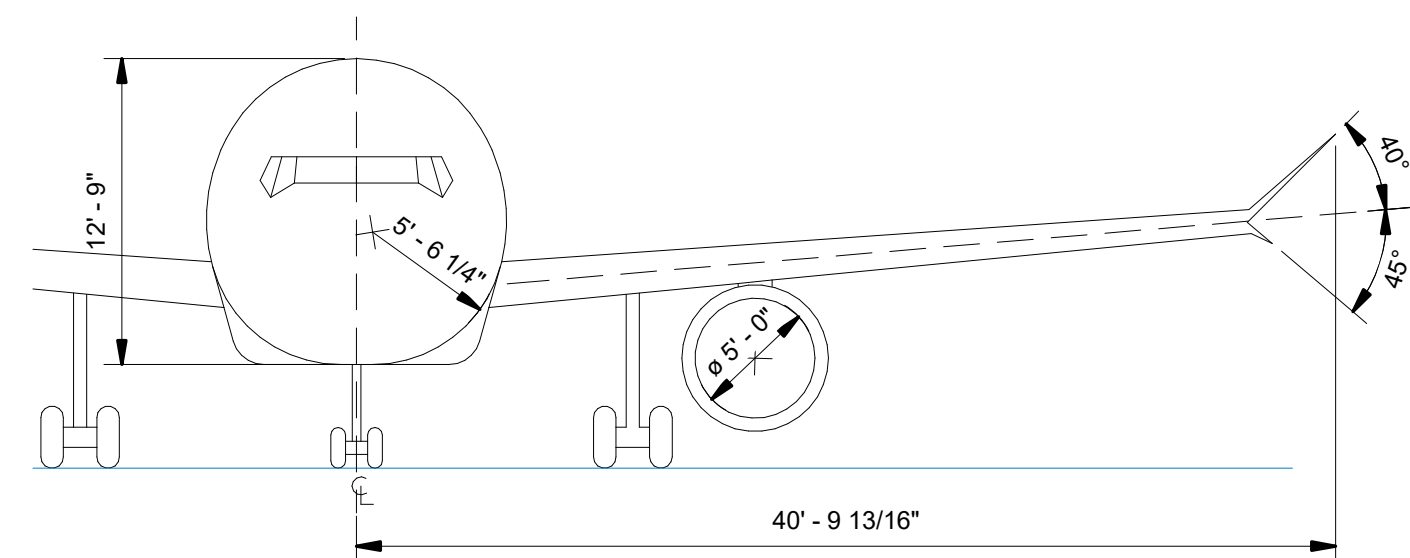
**LINE STYLE STANDARDS** **REFERENCE**

LEASE LINES		MATCHLINES	
CENTERLINE		FIRE RATING - 1 HR	
DEMOLISHED		FIRE RATING - 2 HR	
HIDDEN LINES		ROOM SEPARATION LINES	
OVERHEAD		AREA BOUNDARY LINES	
PATH OF TRAVEL			

1 - Extra Light	
2 - Light	
3 - Medium	
4 - Medium	
5 - Bold	
6 - Bold	
7 - Bold	
8 - Bold	

**DIMENSION STYLE STANDARDS** **SAMPLE**



**LEVEL OF ACCURACY**

Dimension settings to ensure dimensional accuracy, model accuracy should be set to 1/256"



2022ZGEN  
DESIGN NUMBER

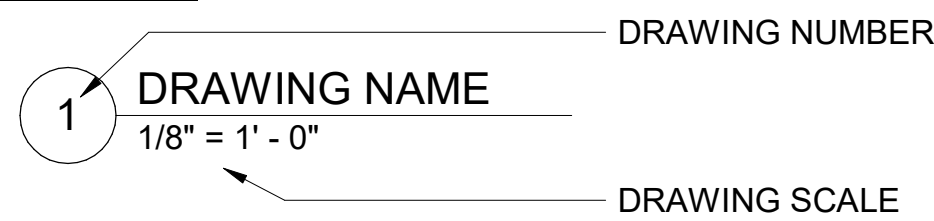
####  
PROJECT NUMBER

FACILITY NAME  
PROJECT NAME  
PORT GRAPHIC STANDARDS

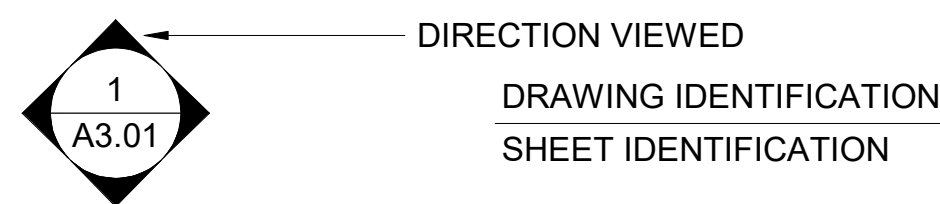
SUBMITTED BY	AMANDA COLEMAN
DESIGNED BY	D. KEARNS
DRAWN BY	D. KEARNS
CHECKED BY	A. SHORT
DATE	MONTH YYYY
SHEET NO.	TYPE AA
DRAWING NO.	DISC. SHT. NO.
PDX YYYY-####	GI.03

CAN YOU SEE THE AIRPLANES? THE ADJACENT SAMPLES SHOW THREE DIFFERENT LEVELS OF SHADING. SETTINGS FOR VIEWING AND PRINTING DRAWING CONTENT ARE OPTIMIZED WHEN ALL THREE PLANES ARE VISIBLE. THIS GUIDANCE IS PROVIDED FOR REFERENCE ONLY.

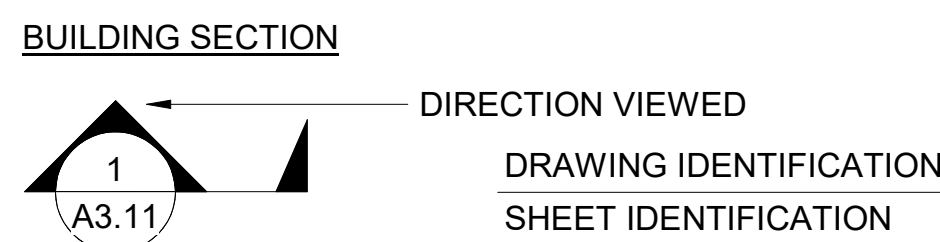
**DRAWING TITLE**



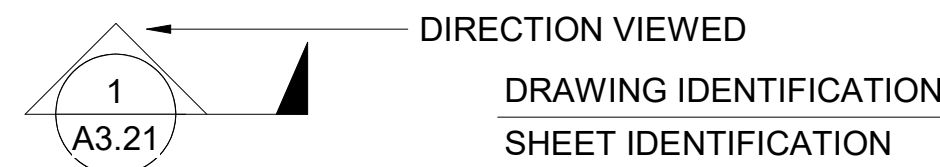
**EXTERIOR ELEVATION**



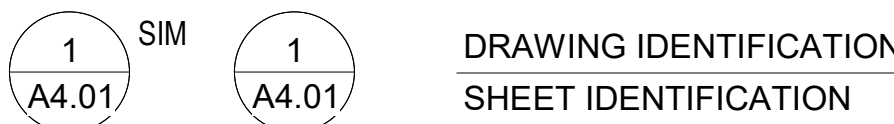
**SECTION ELEVATION**



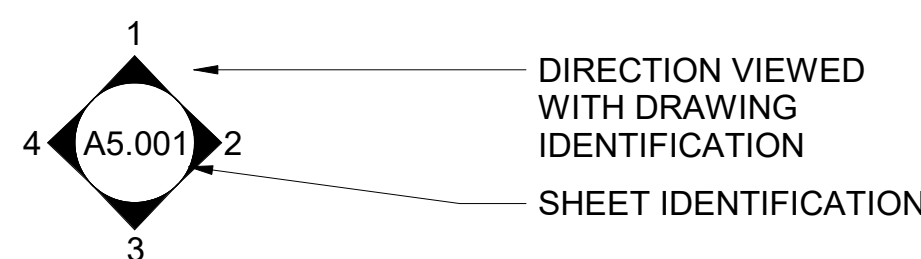
**WALL SECTION**



**DETAIL REFERENCE**



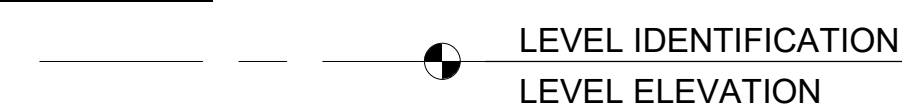
**INTERIOR ELEVATION**



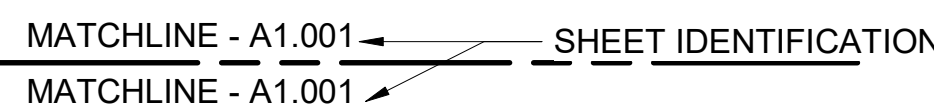
**GRID REFERENCE**



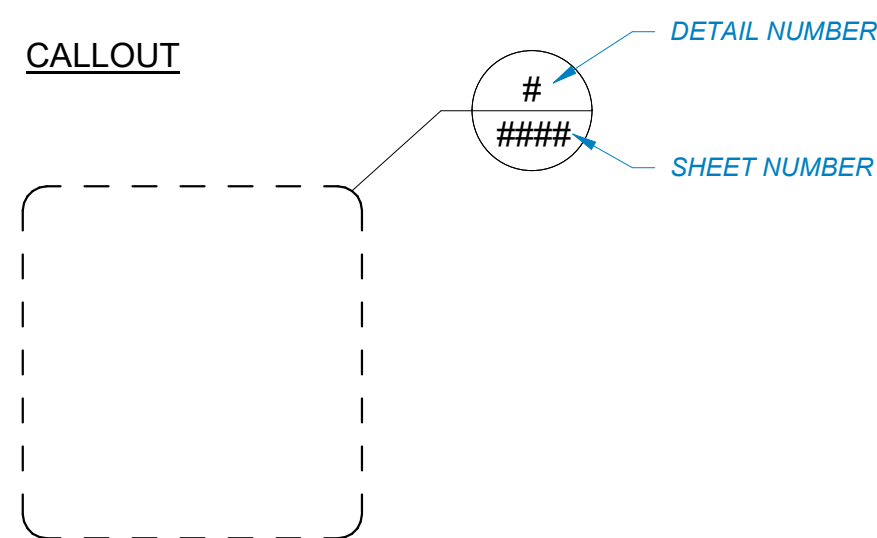
**LEVEL DATUM**



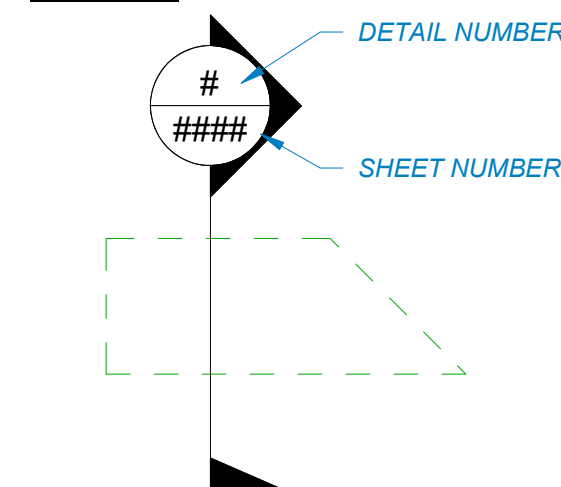
**MATCHLINE**



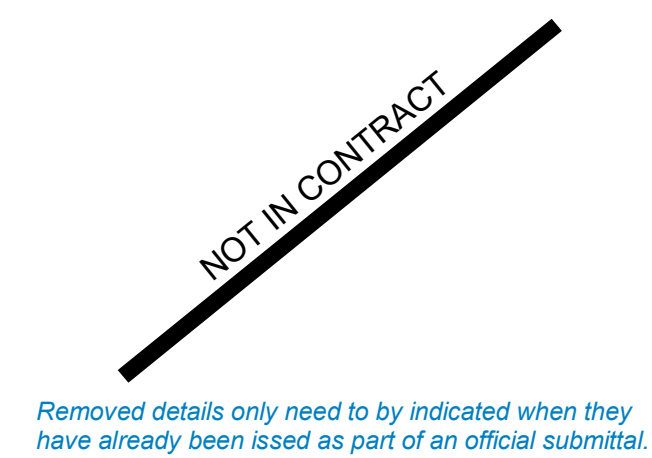
**CALLOUT**



**SECTION**



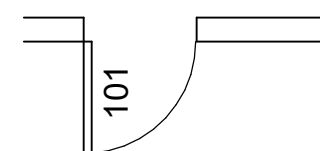
**REMOVED DETAIL**



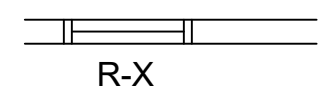
**PARTITION TAG**



**DOOR TAG**



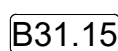
**RELITE TAG**



**GLASS TYPE TAG**



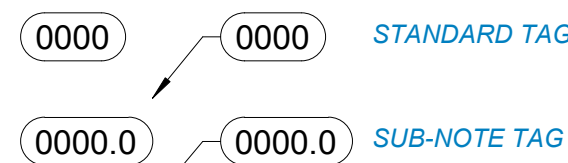
**CASEWORK TAG**



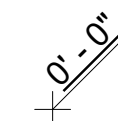
**REVISION TAG**



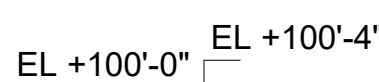
**KEYNOTE TAG**



**SPOT ELEVATION REFERENCE:**



**SLAB ELEVATION DIFFERENCE:**



**ABBREVIATIONS**

AND	&	N	NATURAL GAS	G
CENTERLINE	C.L.	(UTILITY DESIGNATION)		
DEGREES	°	NOT IN CONTRACT	N.I.C.	
FEET	'	NORTH	N	
INCHES	"	NORTHING	N:	
<b>A</b>		NORTHEAST	NE	
ABANDONED	ABAND.	NORTHWEST	NW	
AIRPLANE FUEL	AF	NOT TO SCALE	N.T.S.	
ASPHALT CONCRETE	AC	<b>O</b>		
<b>C</b>		OFFSET	OFF.	
CAST IRON PIPE	CIP	ORDINARY HIGH WATER	OHW	
CATCH BASIN	CB	OUTSIDE DIAMETER	O.D.	
COMMUNICATIONS	COMM	OVERHEAD POWER	OP	
CONCENTRATE DEICING	CDEI	<b>P</b>		
CONCRETE	CONC.	PAVEMENT	PVMT.	
CONCRETE MASONRY UNIT	CMU	PORTLAND INTERNATIONAL AIRPORT	PDX	
CONCRETE SEWER PIPE	CSP	PERFORATED PIPE	PRF	
CORRUGATED METAL PIPE	CMP	POINT OF TANGENCY	PT	
<b>D</b>		POINT OF VERTICAL INTERSECTION	PVI	
DILUTE DEICING	DDEI	POINT OF CURVATURE	PC	
DISTANCE	DIST	POINT OF INTERSECTION	PI	
DEICING	DEI	POLYVINYL CHLORIDE PIPE	PVC	
DIAMETER	DIA	PORTLAND CEMENT CONCRETE	PCC	
DUCTILE IRON PIPE	DIP	PROFESSIONAL ENGINEER	P.E.	
<b>E</b>		<b>R</b>		
EACH	EA	RADIUS	R	
EAST	E	REMOVE	REM.	
EASTING	E:	RIGHT	RT	
ELECTRICAL	ELEC.	RIGHT OF WAY	R.O.W.	
ELECTRICAL (UTILITY DESIGNATION)	E	<b>S</b>		
ELEVATION	ELEV.	SANITARY SEWER	SS	
EQUAL (EQUAL SPACING)	EQ	STORM SEWER	STS	
EXISTING	EXIST.	SOUTH	S	
<b>F</b>		SOUTHEAST	SE	
FEDERAL AVIATION ADMINISTRATION	FAA	SOUTHWEST	SW	
FIBER OPTIC	FO	SPACED	SP.	
<b>G</b>		STATION	STA.	
GALVANIZED	GALV.	<b>T</b>		
<b>H</b>		TEMPORARY	TEMP.	
HAND HOLE	HH	TYPICAL	TYP.	
HIGH DENSITY POLYETHYLENE	HDPE	<b>V</b>		
HORIZONTAL	HORIZ.	VERTICAL	VERT.	
<b>I</b>		<b>W</b>		
IDENTIFICATION	ID	WATER	W	
INSIDE DIAMETER	I.D.	FIRE PROTECTION WATER	WF	
INVERT ELEVATION	IE	WEST	W	
<b>K</b>		<b>L</b>		
KIPS	K	LEFT	LT	
KIPS PER SQUARE FOOT	KSF	<b>M</b>		
KIPS PER SQUARE INCH	KSI	MANHOLE	MH	
<b>L</b>		MANHOLE CATCH BASIN	MH/CB	
<b>M</b>		MAXIMUM	MAX.	
MANHOLE	MH	MISCELLANEOUS	MISC.	

GRAPHIC SCALE FOR REFERENCE ONLY

NO.	DATE	BY	REVISIONS	NO.	DATE	BY	REVISIONS

**PORT OF PORTLAND**  
*Possibilities in every direction since 1897.*

2022ZGEN  
DESIGN NUMBER

#####  
PROJECT NUMBER

FACILITY NAME	AMANDA COLEMAN
DESIGNED BY	D. KEARNS
DRAWN BY	D. KEARNS
CHECKED BY	A. SHORT
DATE	MONTH YYYY
SHEET NO.	TYPE AA
DRAWING NO.	DISC. SHT. NO.
PDX YYYY-####	GI.04

PROJECT NAME	PORT GRAPHIC STANDARDS
--------------	------------------------



CAN YOU SEE THE AIRPLANES? THE ADJACENT SAMPLES SHOW THREE DIFFERENT LEVELS OF SHADING. SETTINGS FOR VIEWING AND PRINTING DRAWING CONTENT ARE OPTIMIZED WHEN ALL THREE PLANES ARE VISIBLE. THIS GUIDANCE IS PROVIDED FOR REFERENCE ONLY.

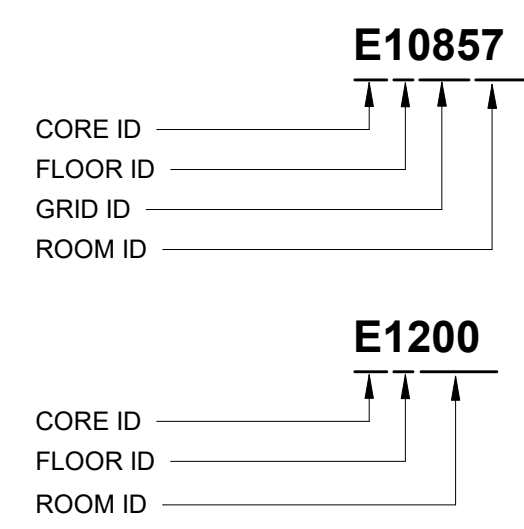
**ROOM NUMBERING & FORMAT**

5 & 6 DIGIT ROOM NUMBERS WILL COEXIST

THE 6 DIGIT ROOM NUMBERING SYSTEM WILL BE INTEGRATED INTO NEW TERMINAL CONSTRUCTION PROJECTS. TERMINAL BUILDING ROOM REMODELING TYPICALLY OCCURS WHEN AN EXISTING TENANT VACATES THE PREMISES AND A NEW TENANT HAS SIGNED A LEASE TO OCCUPY THE SPACE/SPACES. HOWEVER IF THE IMPACTS DONT CHANGE WALL AND DOOR LOCATIONS, THE EXISTING 5 DIGIT ROOM NUMBER WILL BE REUSED.

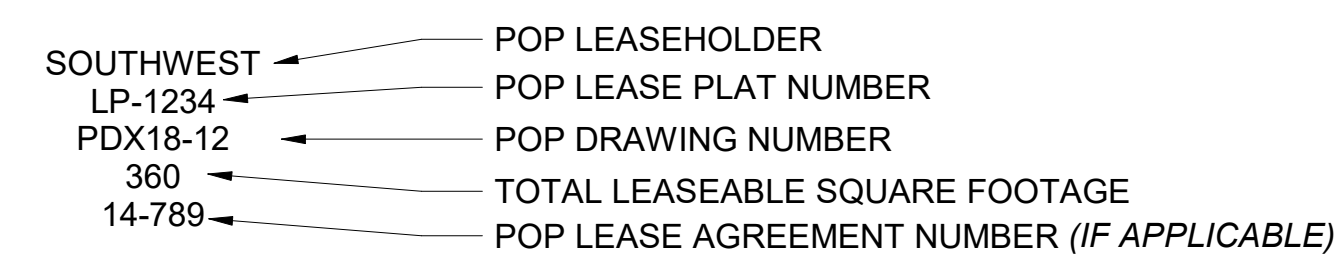
6 DIGIT ROOM NUMBERS START WITH THE CORE ID "E" (CONCOURSE E) FOLLOWED BY THE FLOOR ID "1" (DEPLANING) FOLLOWED BY TWO DIGIT BUILDING GRID ID "08" (BUILDING GRID 08) AND THE FINAL TWO DIGITS "57" ARE THE ASSIGNED ROOM NUMBER.

5 DIGIT ROOM NUMBERS START WITH THE CORE ID "E" (CONCOURSE E) FOLLOWED WITH FLOOR ID "1" (DEPLANING LEVEL) FOLLOWED BY THE THREE DIGIT ASSIGNED ROOM NUMBER

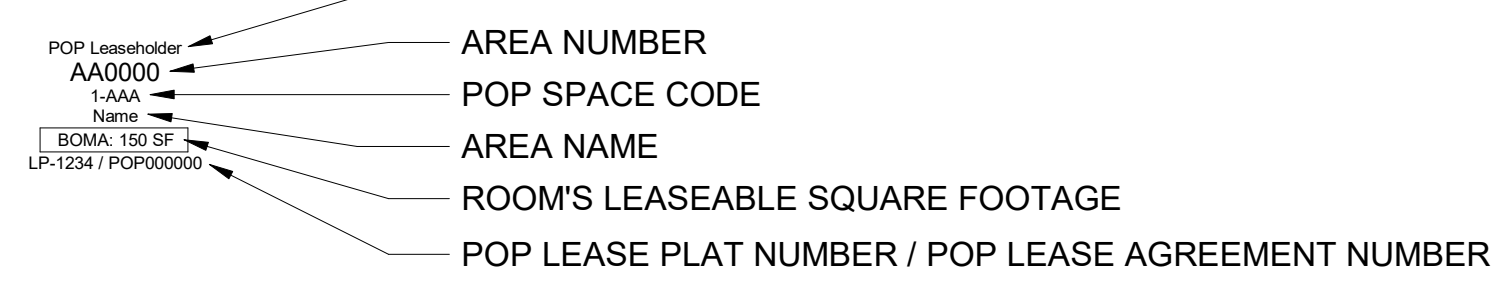


**ROOM & AREA TAGS**

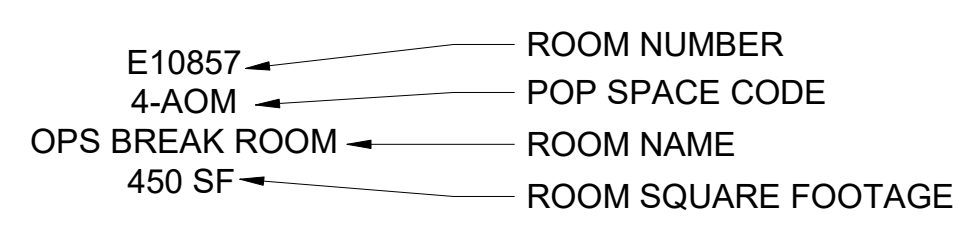
**SPACE ALLOCATION / LEASE AREA TAG**



**BOMA AREA TAG**



**ROOM TAG**



**SPACE CODES**

- AIRLINE ONE**  
1-ATC: AIRLINE TICKET COUNTER  
1-ATI: SELF SERVICE KIOSKS
- AIRLINE TWO**  
2-ATO: AIRLINE TICKET OFFICE  
2-ATM: AIRLINE TICKET OFFICE (COMMON USE)  
2-APL: AIRLINE PASSENGER LOUNGE  
2-ADA: AIRLINE DEPARTURE AREA (HOLDROOM)
- AIRLINE THREE**  
3-ABC: AIRLINE JOINT BAGGAGE CLAIM  
3-AUA: AIRLINE UPPER LEVEL AREA
- AIRLINE FOUR**  
4-ASO: AIRLINE BAGGAGE SERVICE OFFICES  
4-AOM: AIRLINE OPERATIONS & MAINTENANCE
- AIRLINE FIVE**  
5-AIA: AIRLINE INTERNATIONAL ARRIVAL FACILITY  
5-AOB: AIRLINE BAGGAGE MAKE-UP ROOMS
- AIRLINE SIX**  
6-AIB: AIRLINE ENCLOSED BAGGAGE ROAD (IN-BOUND)

- CONCESSIONS**  
CFO: CONCESSIONS FOOD OUTLET  
CRO: CONCESSIONS RETAIL OUTLET  
CFS: CONCESSIONS FOOD SERVICE  
CRS: CONCESSIONS RETAIL STORAGE  
COA: CONCESSIONS OFFICE AREAS  
CPS: PUBLIC SERVICE CONCESSIONS

- PUBLIC AREAS**  
EDS: EXPLOSIVE DETECTION SYSTEM  
GPA: GENERAL COMMON AREA  
GPM: PEOPLE MOVERS (ESCALATORS, ELEVATORS, MOVING WALKWAYS, STAIRS)  
GPS: COMMON AREA RESTROOMS, LOCKER ROOMS  
SSE: SECURITY SPACES (CTX's, CHECKPOINTS, ETD's)

- PORT AREAS**  
POP: PORT OF PORTLAND (OFFICE, STORAGE)  
PMB: MECHANICAL/ELECTRICAL/BLDG RELATED (ELEC, TELEPHONE, NETWORK, HVAC, JANITORIAL)

- FEDERAL INSPECTION SERVICES**  
FPU: FIS COMMON AREAS  
FPR: FIS PRIVATE AREAS (FISH & WILDLIFE, CUSTOMS/BORDER PROTECTION, AGRICULTURE, SEARCH ROOMS)  
FTO: FIS RESTROOMS  
FCP: FIS CHECKPOINT

- GOVERNMENT AREAS**  
FAA: FEDERAL AVIATION ADMINISTRATION AREAS  
TSA: TRANSPORTATION SECURITY ADMINISTRATION & GENERAL SERVICES ADMINISTRATION  
USO:

UNA: UNASSIGNED



POP - Room Numbering Guide

0. 1/4" = 12"  
GRAPHIC SCALE FOR REFERENCE ONLY

NO.	DATE	BY	REVISIONS	NO.	DATE	BY	REVISIONS

**PORT OF PORTLAND**  
*Possibilities in every direction since 1891.*

2022ZGEN  
DESIGN NUMBER

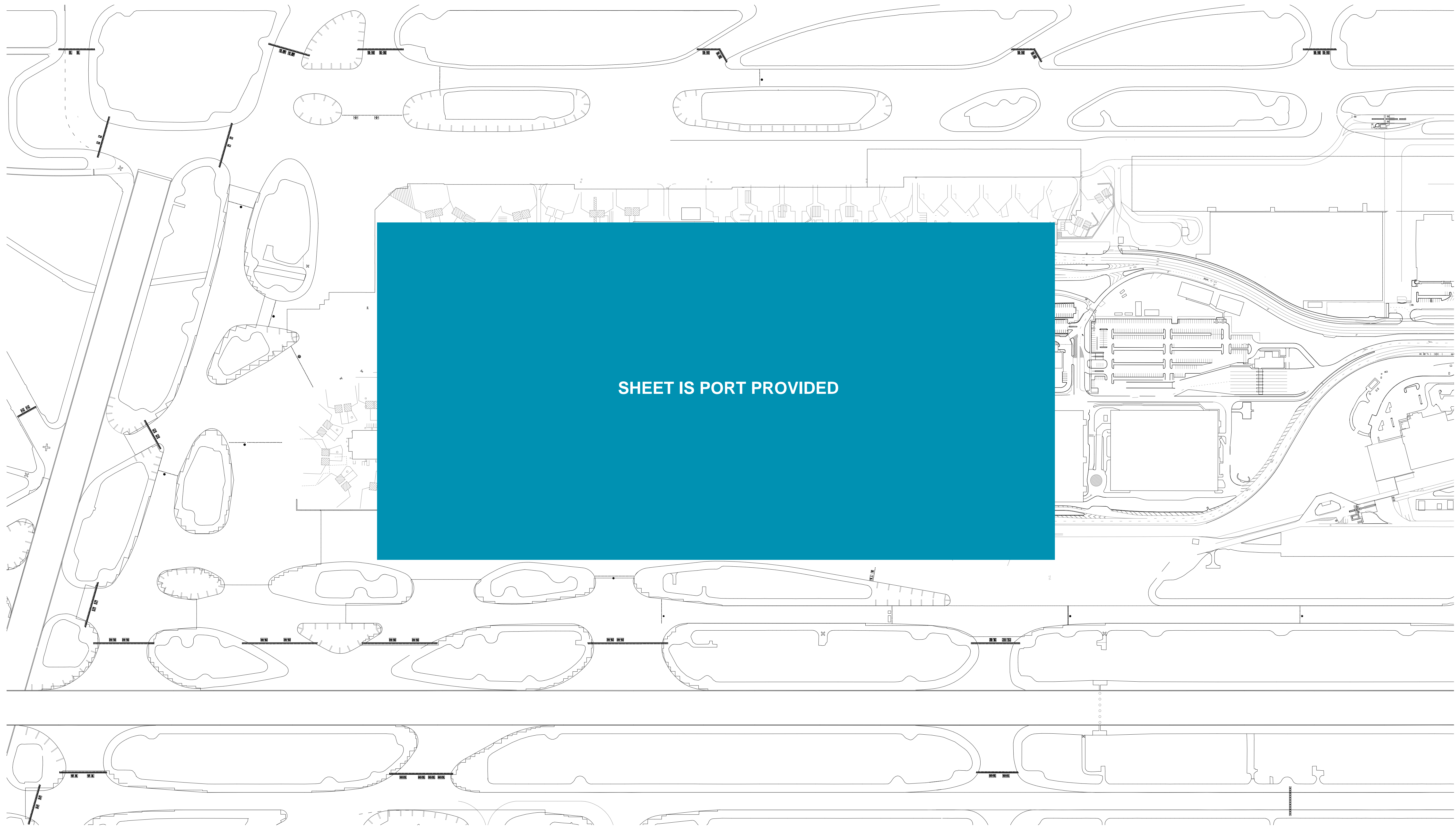
#####  
PROJECT NUMBER

FACILITY NAME	
PROJECT NAME	
SPACE & ROOM STANDARDS	

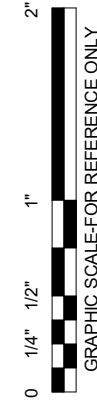
SUBMITTED BY	AMANDA COLEMAN
DESIGNED BY	D. KEARNS
DRAWN BY	D. KEARNS
CHECKED BY	A. SHORT
DATE	MONTH YYYY
SHEET NO.	TYPE AA
DRAWING NO.	DISC. SHT. NO.
PDX YYYY-####	GI.05



CAN YOU SEE THE AIRPLANES? THE ADJACENT SAMPLES SHOW THREE DIFFERENT LEVELS OF SHADING. SETTINGS FOR VIEWING AND PRINTING DRAWING CONTENT ARE OPTIMIZED WHEN ALL THREE PLANES ARE VISIBLE. THIS GUIDANCE IS PROVIDED FOR REFERENCE ONLY.



SHEET IS PORT PROVIDED



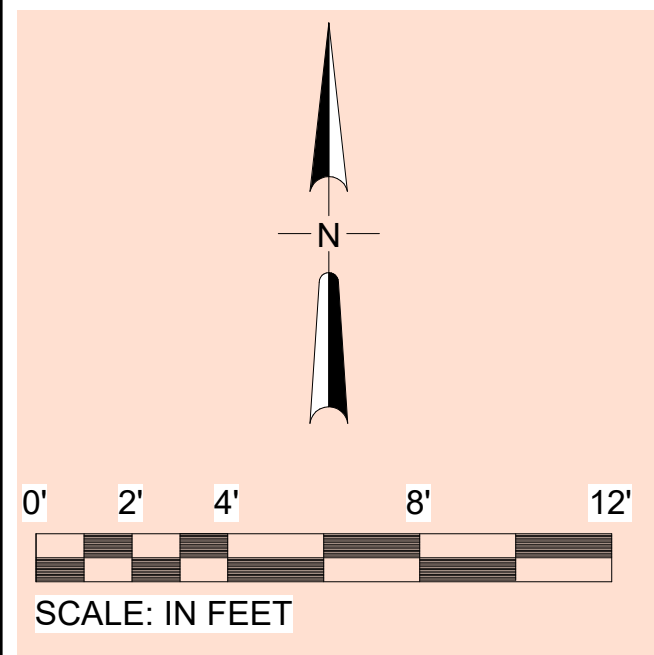
NO.	DATE	BY	REVISIONS	NO.	DATE	BY	REVISIONS



2022ZGEN  
DESIGN NUMBER PROJECT NUMBER

FACILITY NAME		SUBMITTED BY		AMANDA COLEMAN	
PROJECT NAME		DESIGNED BY		D. KEARNS	
VICINITY MAP		DRAWN BY		D. KEARNS	
		CHECKED BY		A. SHORT	
		DATE		MONTH YYYY	
		SHEET NO.		TYPE AA	
		DRAWING NO.		DISC. SHT. NO.	
		PDX YYYY-####		G1.06	

CAN YOU SEE THE AIRPLANES? THE ADJACENT SAMPLES SHOW THREE DIFFERENT LEVELS OF SHADING. SETTINGS FOR VIEWING AND PRINTING DRAWING CONTENT ARE OPTIMIZED WHEN ALL THREE PLANES ARE VISIBLE. THIS GUIDANCE IS PROVIDED FOR REFERENCE ONLY.



grid bubble

city stamps

**NOTES**

*The plural format "NOTES" is used for both single and multiple notes*

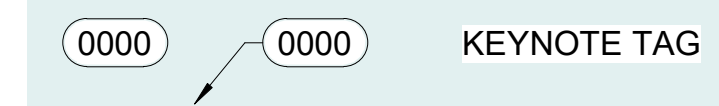
note, legend

1. SEE ELECTRICAL DRAWINGS FOR RELOCATION OR REMOVAL OF EXISTING SIGN PADS AND LOCATION OF NEW SIGNS
2. NOTE TWO
3. FOR ADJACENT GEOMETRY TO THE EAST, SEE SHEET C1.04.

**KEYNOTES**

- 12 EXISTING TO REMAIN
- 0458 REMOVE EXISTING FLOOR COVERING
- 705.2 PASSENGER BOARDING BRIDGE
- C62 EXISTING TO REMAIN. MAINTAIN EXISTING CIRCUITING AND CONTROL.

**LEGEND**

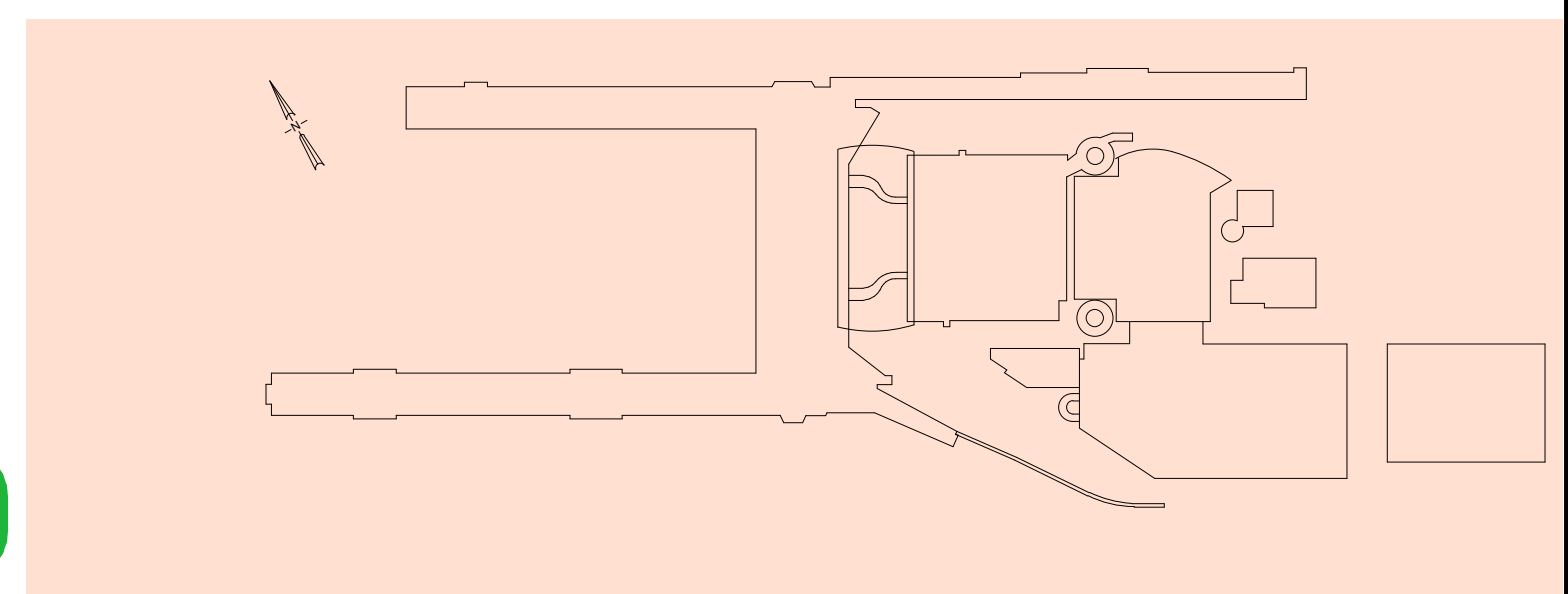


drawing area

grid bubble

**DRAWING NAME**  
1/4" = 1'-0"

**SAMPLE** ALL CONTENT ON THIS SHEET IS PROVIDED AS A SAMPLE.



0 1/4" 1/2" 1" GRAPHIC SCALE FOR REFERENCE ONLY

NO.	DATE	BY	REVISIONS	NO.	DATE	BY	REVISIONS

**PORT OF PORTLAND**  
*Possibilities in every direction since 1891.*

**2022ZGEN**  
DESIGN NUMBER

**####**  
PROJECT NUMBER

FACILITY NAME	
PROJECT NAME	
SAMPLE SHEET - DEMO PLANS	

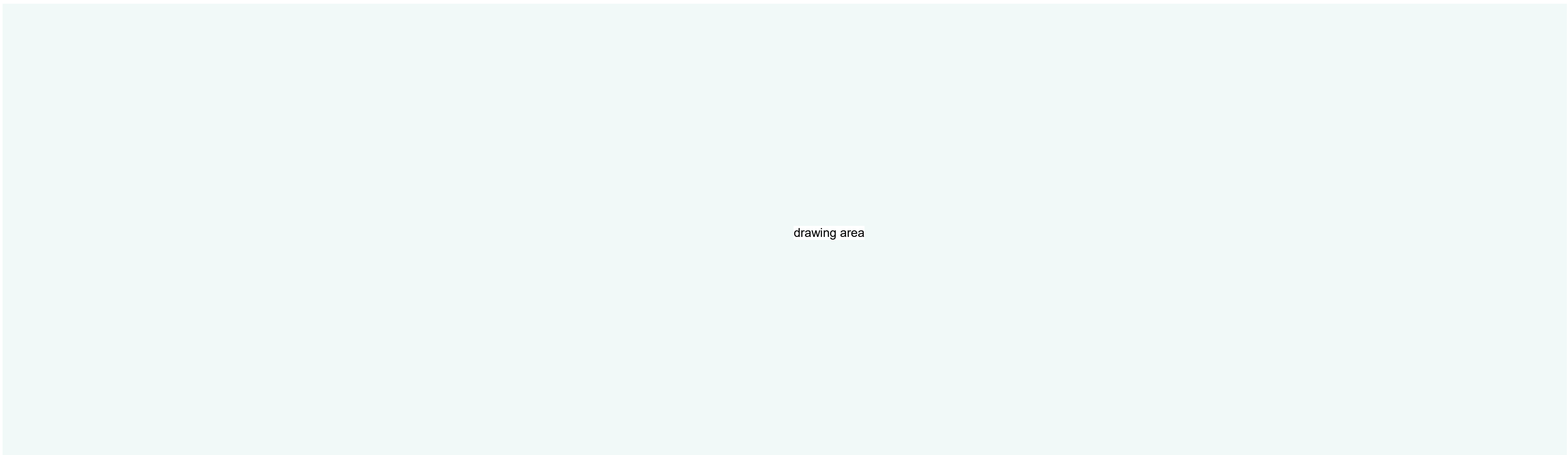
SUBMITTED BY	AMANDA COLEMAN
DESIGNED BY	A.SHORT
DRAWN BY	A.SHORT
CHECKED BY	D. KEARNS
DATE	MONTH YYYY
SHEET NO.	TYPE AA
DRAWING NO.	DISC. SHT. NO.
PDX YYYY-####	A1.01



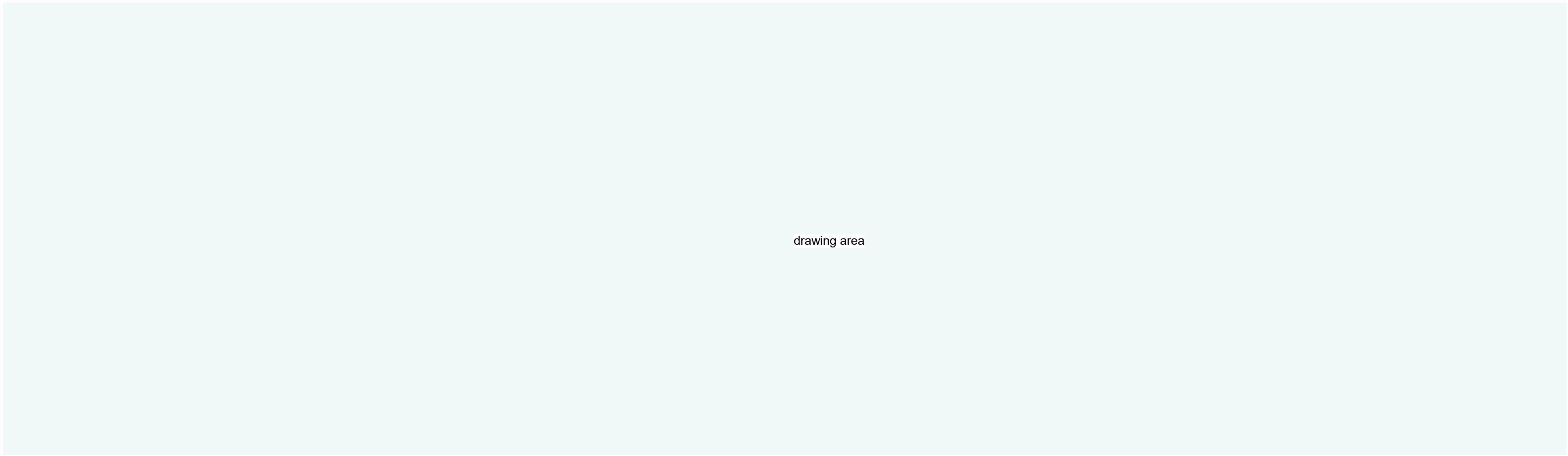




CAN YOU SEE THE AIRPLANES? THE ADJACENT SAMPLES SHOW THREE DIFFERENT LEVELS OF SHADING. SETTINGS FOR VIEWING AND PRINTING DRAWING CONTENT ARE OPTIMIZED WHEN ALL THREE PLANES ARE VISIBLE. THIS GUIDANCE IS PROVIDED FOR REFERENCE ONLY.



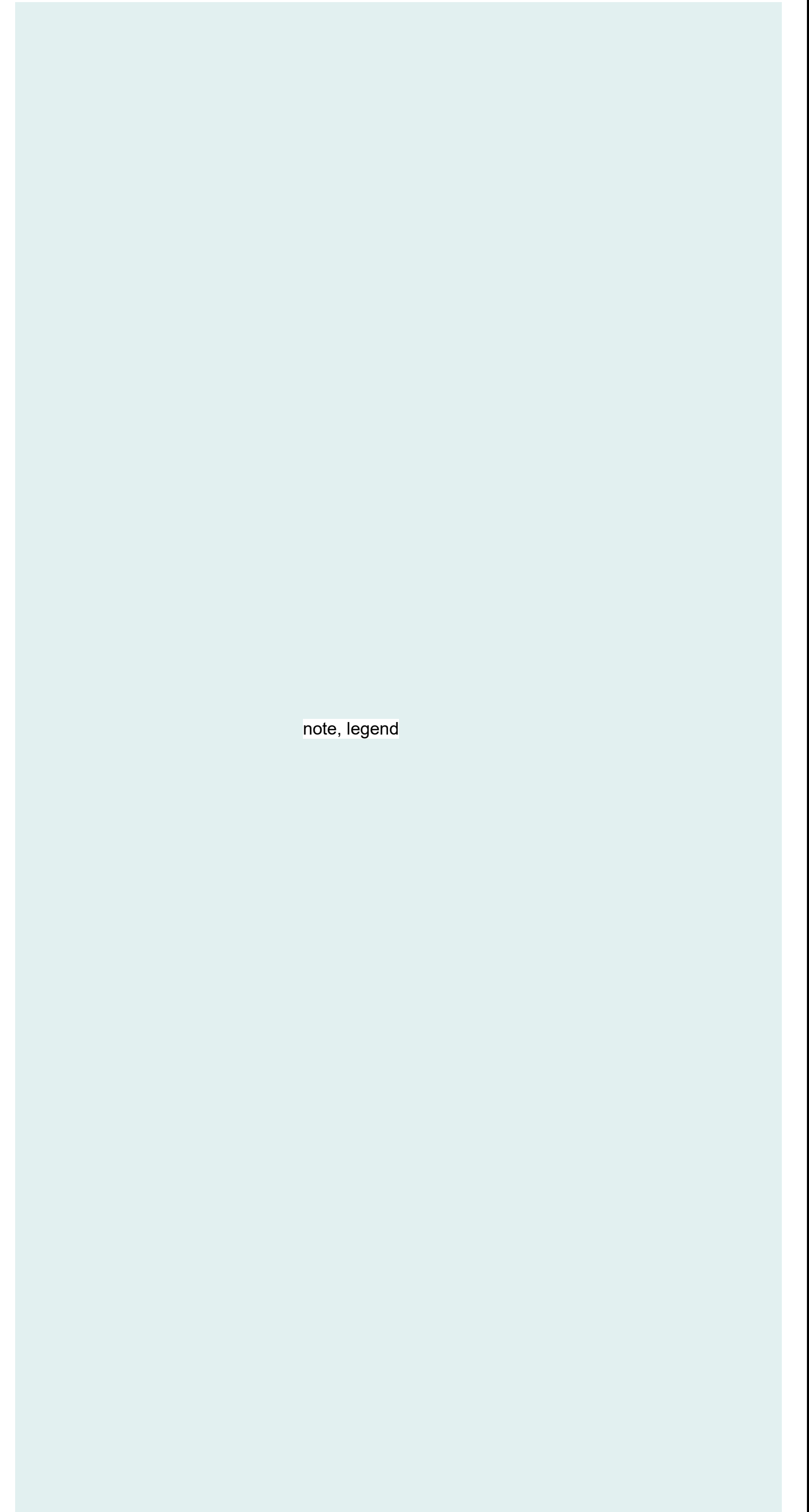
drawing area



drawing area



city stamps



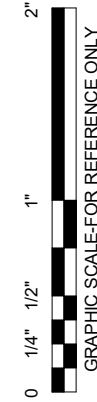
note, legend

1 DRAWING NAME  
1/8" = 1' - 0"

2 DRAWING NAME  
1/8" = 1' - 0"



ALL CONTENT ON THIS SHEET IS PROVIDED AS A SAMPLE.



NO.	DATE	BY	REVISIONS	NO.	DATE	BY	REVISIONS



2022ZGEN  
DESIGN NUMBER

####  
PROJECT NUMBER

FACILITY NAME  
PROJECT NAME  
SAMPLE SHEET - ELEVATIONS

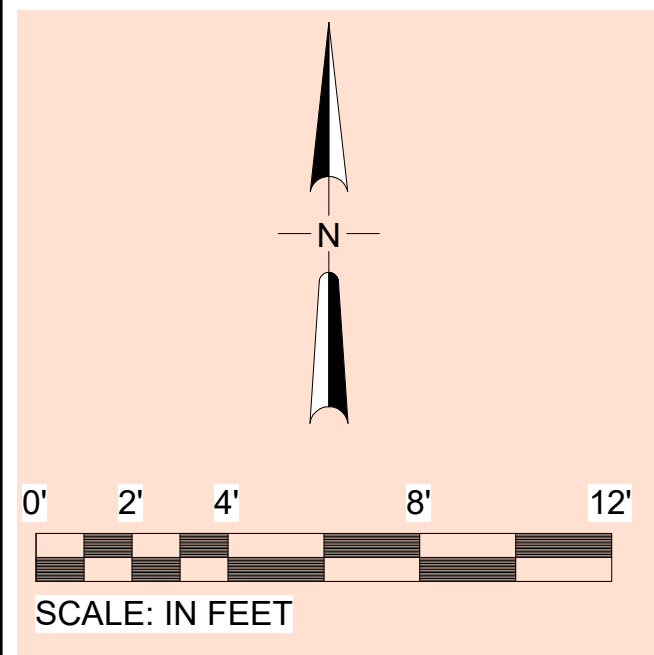
SUBMITTED BY	AMANDA COLEMAN
DESIGNED BY	A.SHORT
DRAWN BY	A.SHORT
CHECKED BY	D. KEARNS
DATE	MONTH YYYY
SHEET NO.	TYPE AA
DRAWING NO.	DISC. SHT. NO.
PDX YYYY-####	A3.01







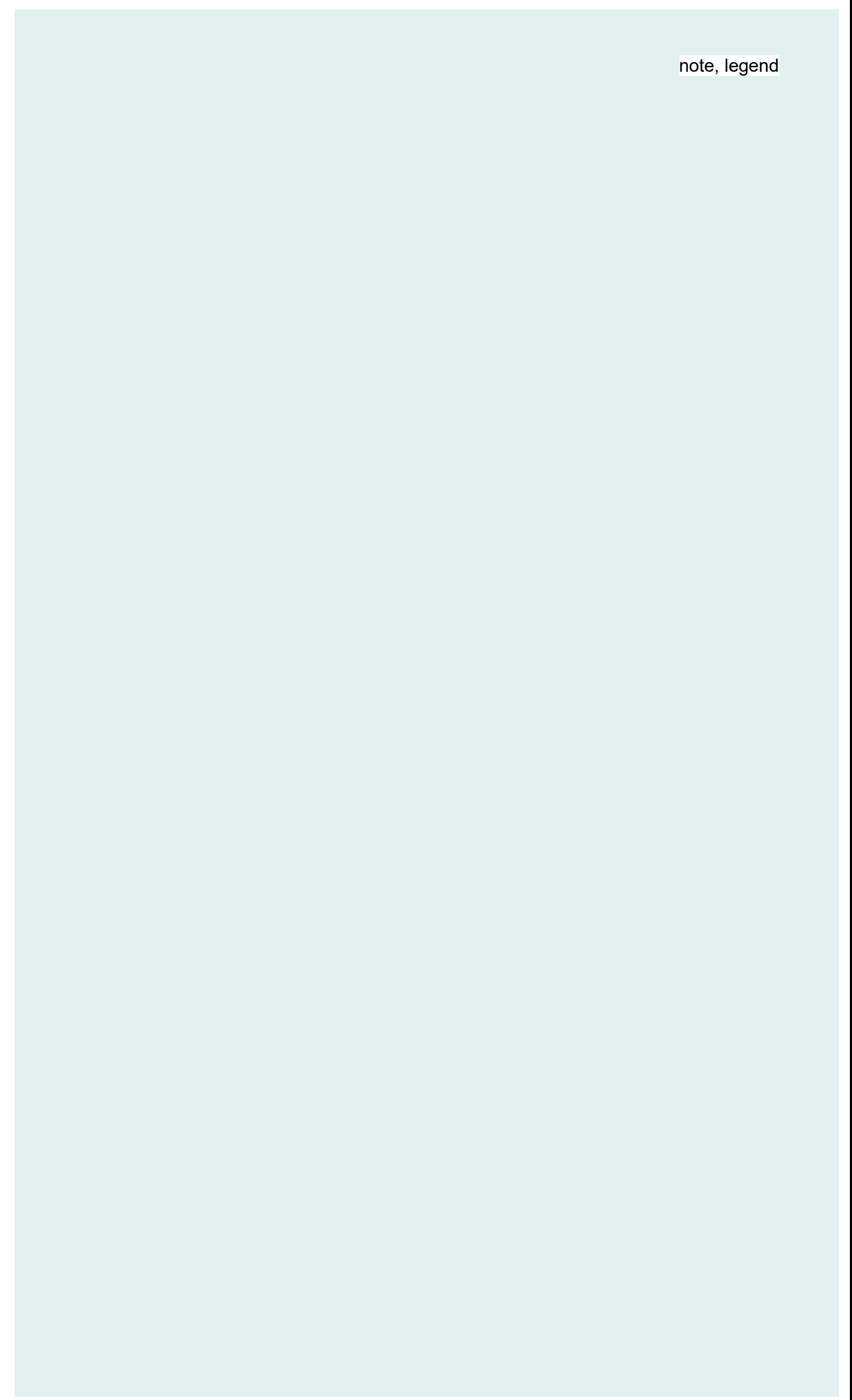
CAN YOU SEE THE AIRPLANES? THE ADJACENT SAMPLES SHOW THREE DIFFERENT LEVELS OF SHADING. SETTINGS FOR VIEWING AND PRINTING DRAWING CONTENT ARE OPTIMIZED WHEN ALL THREE PLANES ARE VISIBLE. THIS GUIDANCE IS PROVIDED FOR REFERENCE ONLY.



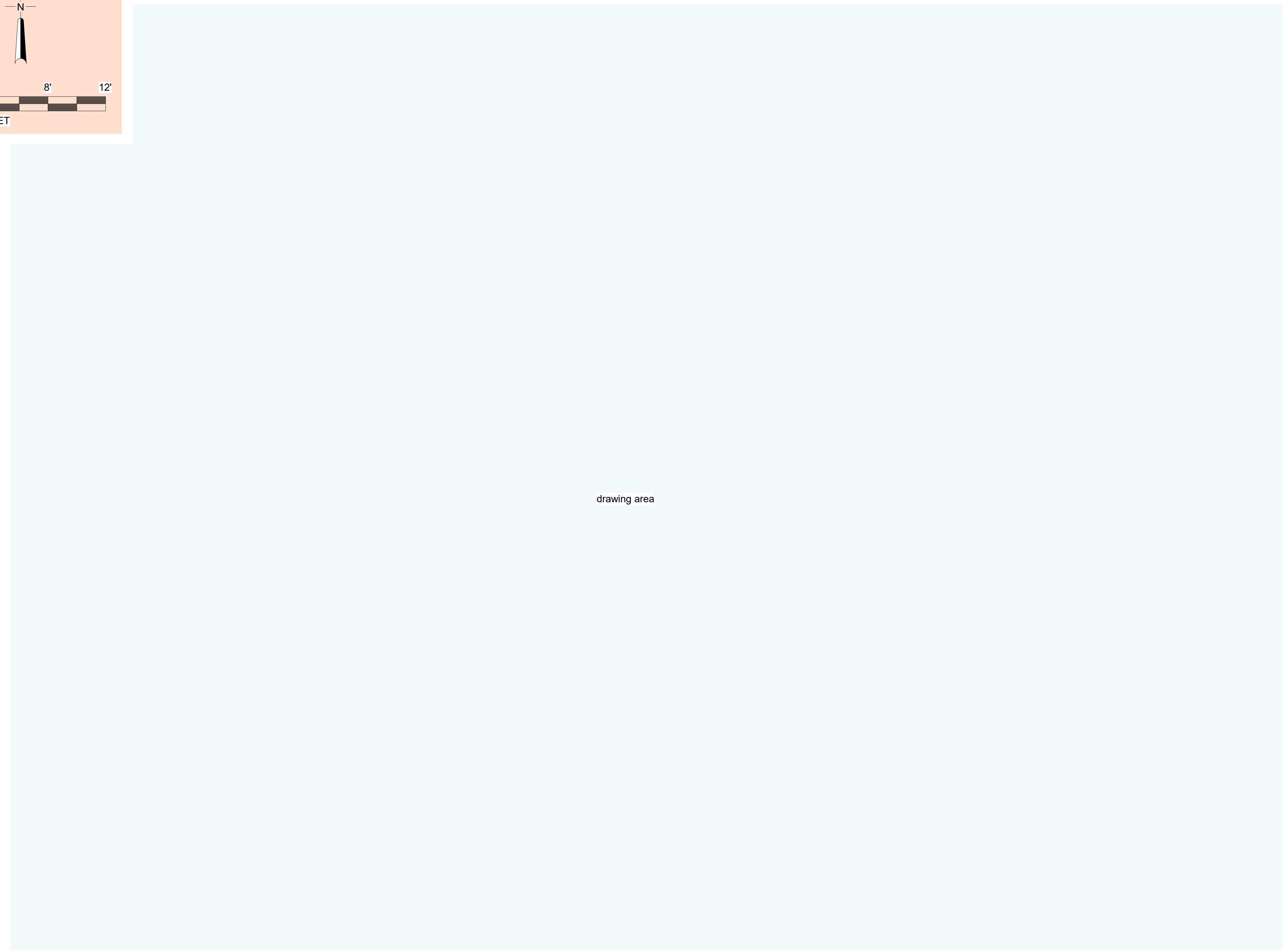
grid bubble



city stamps



note, legend



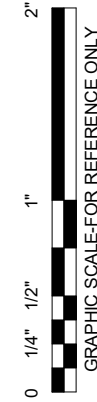
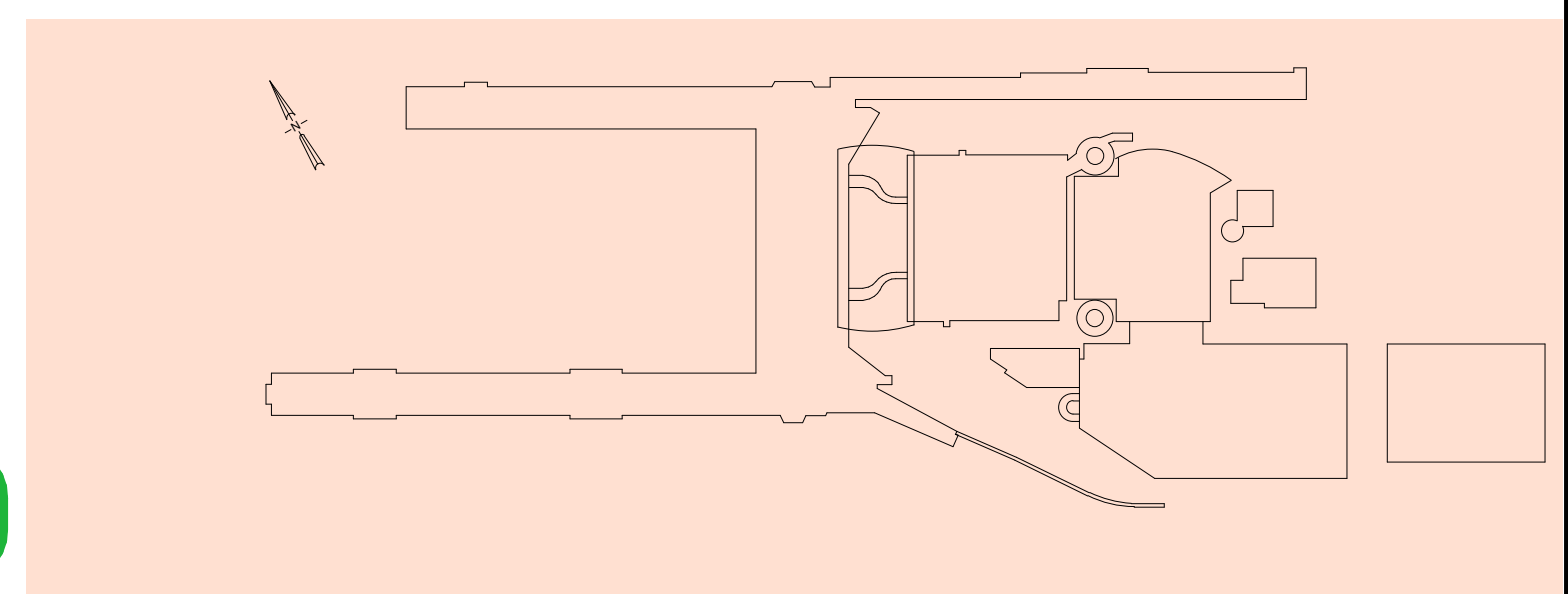
drawing area

grid bubble

DRAWING NAME  
1/4" = 1'-0"



ALL CONTENT ON THIS SHEET IS PROVIDED AS A SAMPLE.



NO.	DATE	BY	REVISIONS	NO.	DATE	BY	REVISIONS

**PORT OF PORTLAND**  
*Possibilities in every direction since 1897.*

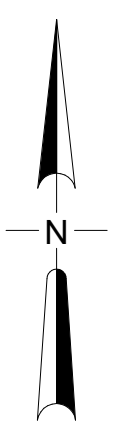
2022ZGEN  
DESIGN NUMBER

####  
PROJECT NUMBER

FACILITY NAME
PROJECT NAME
SAMPLE SHEET - RCP

SUBMITTED BY	AMANDA COLEMAN
DESIGNED BY	A.SHORT
DRAWN BY	A.SHORT
CHECKED BY	D. KEARNS
DATE	MONTH YYYY
SHEET NO.	TYPE AA
DRAWING NO.	DISC. SHT. NO.
PDX YYYY-####	A6.01

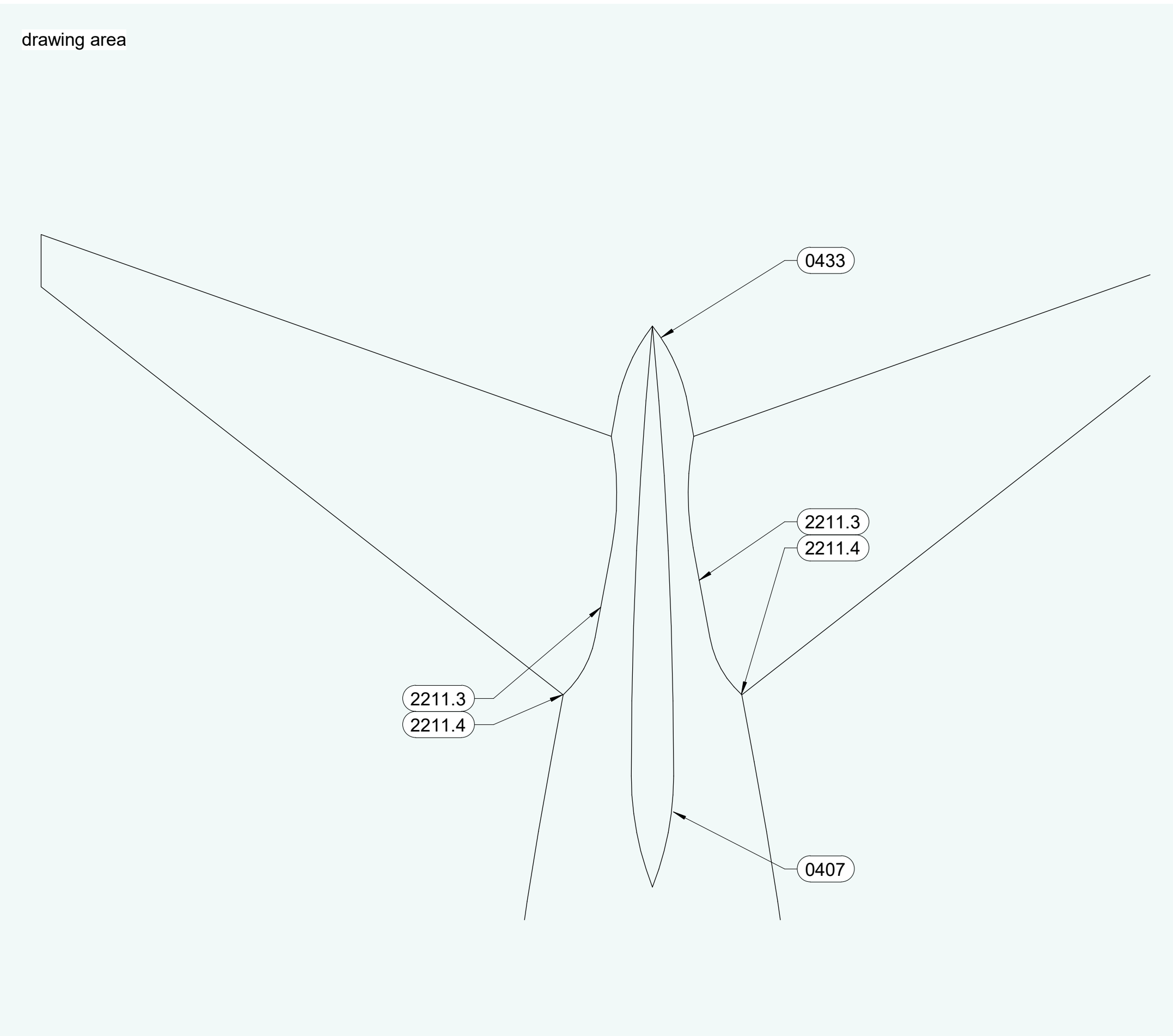
CAN YOU SEE THE AIRPLANES? THE ADJACENT SAMPLES SHOW THREE DIFFERENT LEVELS OF SHADING. SETTINGS FOR VIEWING AND PRINTING DRAWING CONTENT ARE OPTIMIZED WHEN ALL THREE PLANES ARE VISIBLE. THIS GUIDANCE IS PROVIDED FOR REFERENCE ONLY.



SCALE: IN FEET

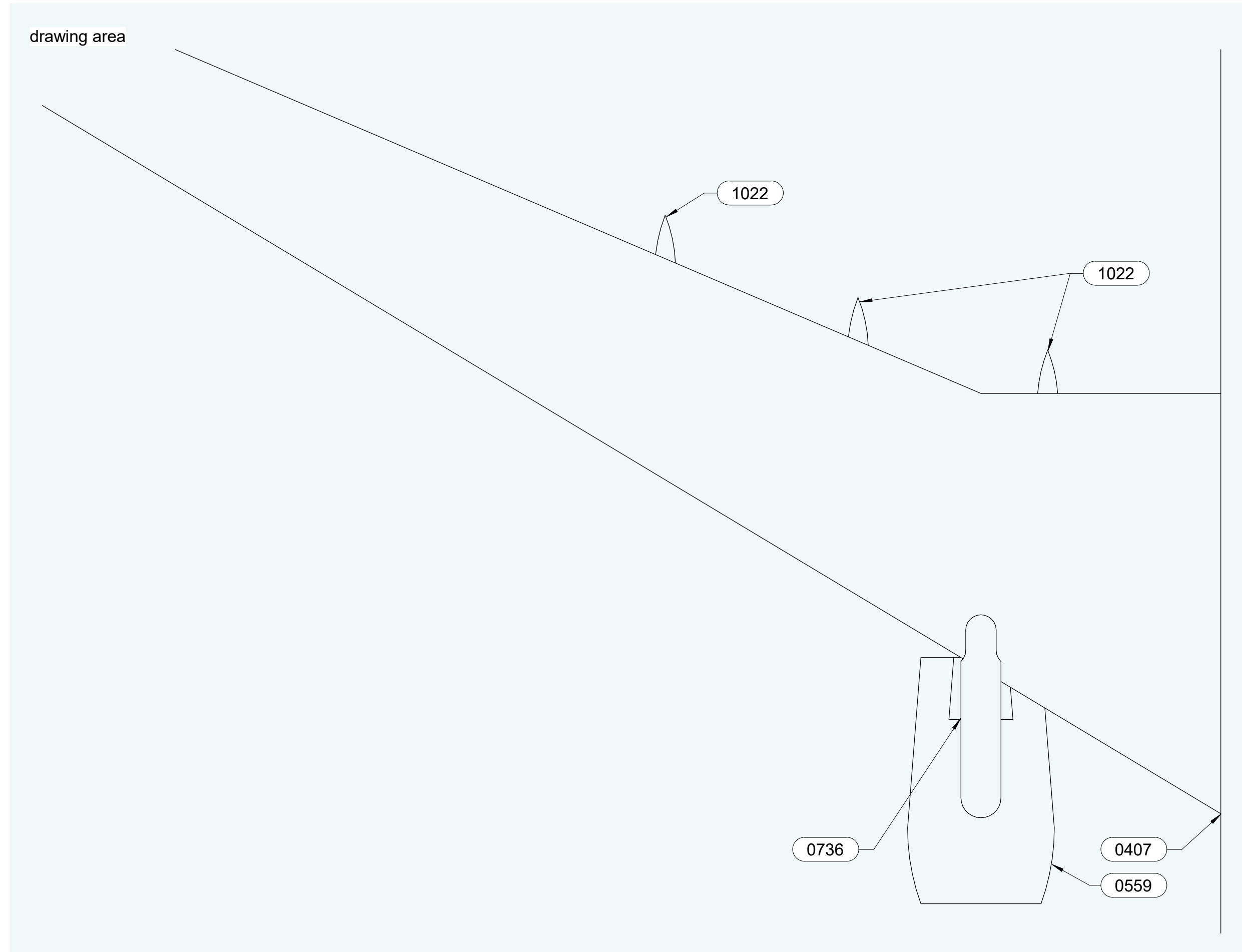
*View-specific North Arrow are not required if all views on the sheets have the same rotations.*

*View-specific bar scales are not required if all views on the sheet are the same.*



legend area (if needed)

1 DRAWING NAME  
1/8" = 1' - 0"



legend area (if needed)

2 DRAWING NAME  
1/8" = 1' - 0"

city stamps

- NOTES**
- REFER TO MANUFACTURER DRAWINGS FOR SPECIFICATIONS AND DIMENSIONS.
  - EXISTING CONDITIONS SHALL BE VERIFIED IN THE FIELD PRIOR TO CONSTRUCTION.
  - AIRCRAFT SHOULD NOT BE OPERATED UNDERWATER.

- KEYNOTES**
- 0407 KEYNOTE 0407
  - 0433 KEYNOTE 0433
  - 0559 KEYNOTE 0559
  - 0736 KEYNOTE 0736
  - 1022 KEYNOTE 1022
  - 2211.3 KEYNOTE 2211.3
  - 2211.4 KEYNOTE 2211.4

note area (sheet specific)



NO.	DATE	BY	REVISIONS	NO.	DATE	BY	REVISIONS

**PORT OF PORTLAND**  
*Possibilities in every direction since 1891.*

2022ZGEN      #####  
DESIGN NUMBER      PROJECT NUMBER

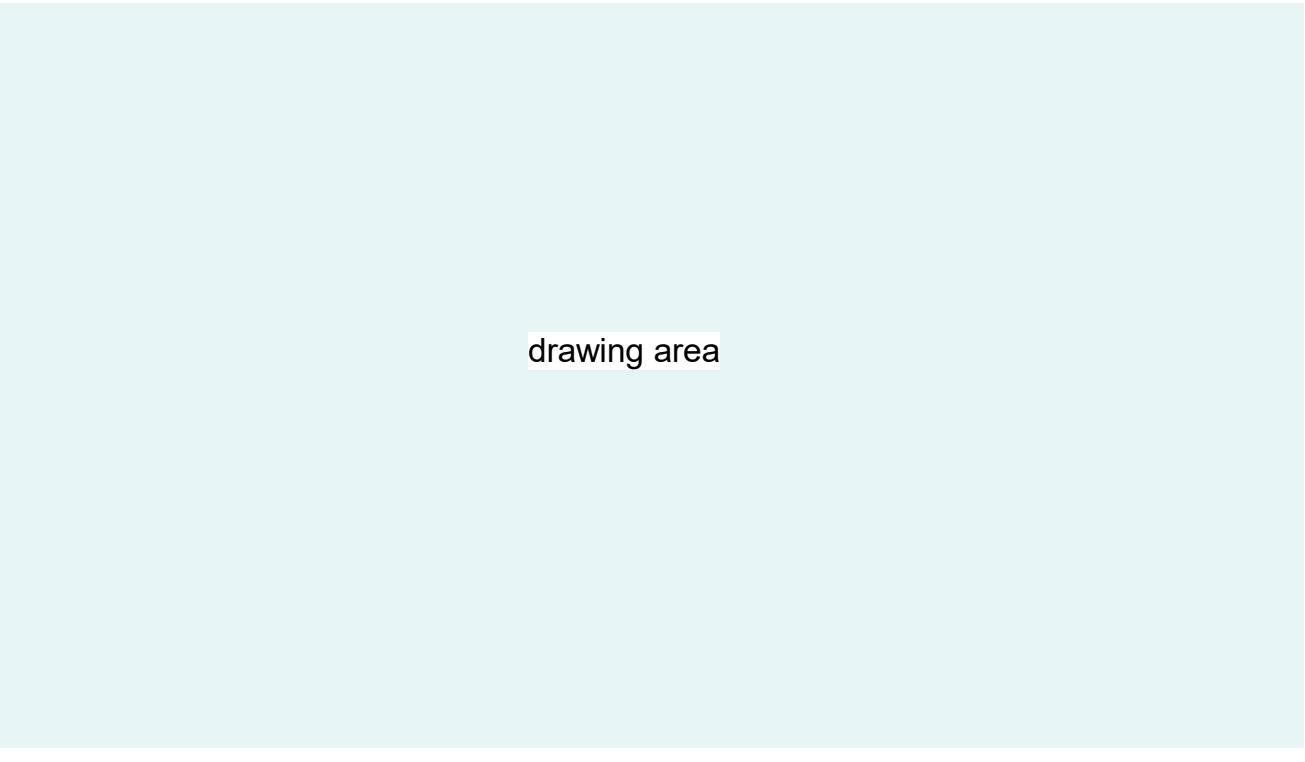
FACILITY NAME
PROJECT NAME
SAMPLE SHEET - ENLARGED PLANS

SUBMITTED BY	AMANDA COLEMAN
DESIGNED BY	A.SHORT
DRAWN BY	A.SHORT
CHECKED BY	D. KEARNS
DATE	MONTH YYYY
SHEET NO.	TYPE AA
DRAWING NO.	DISC. SHT. NO.
PDX YYYY-####	A7.01

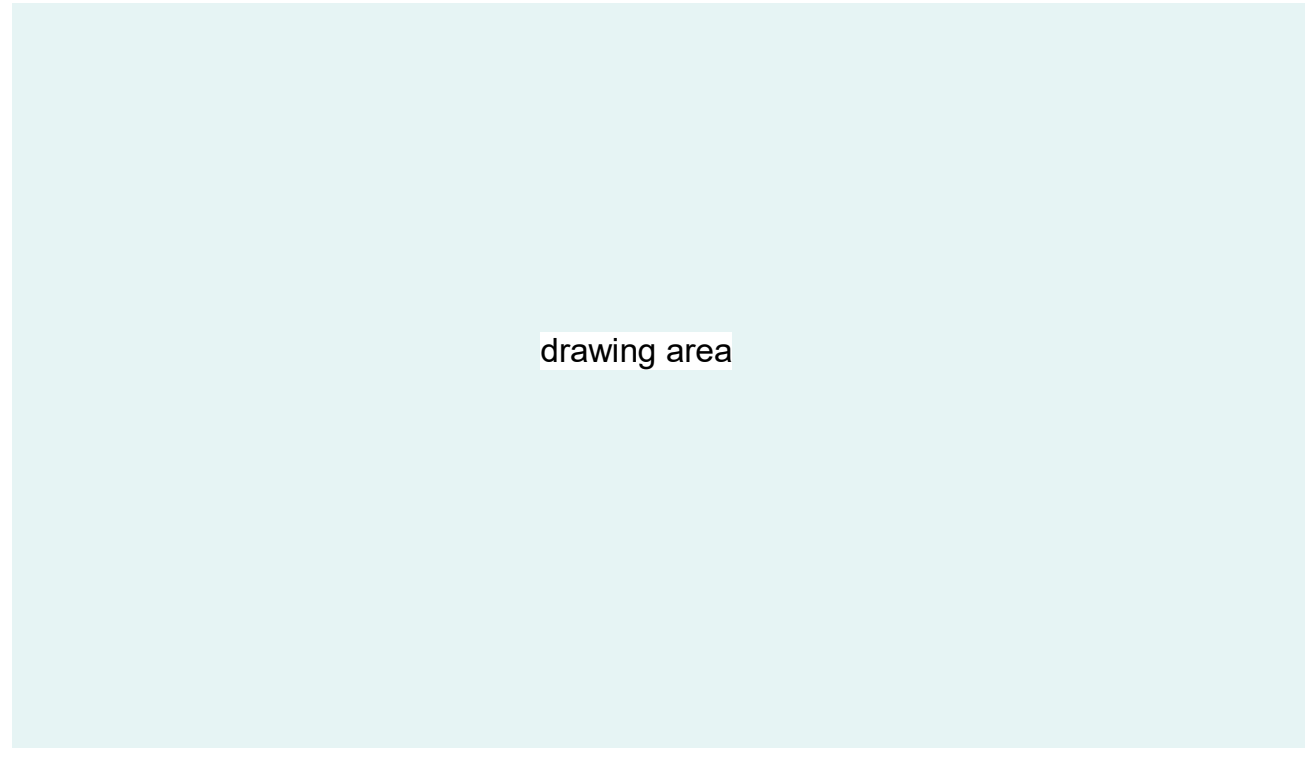




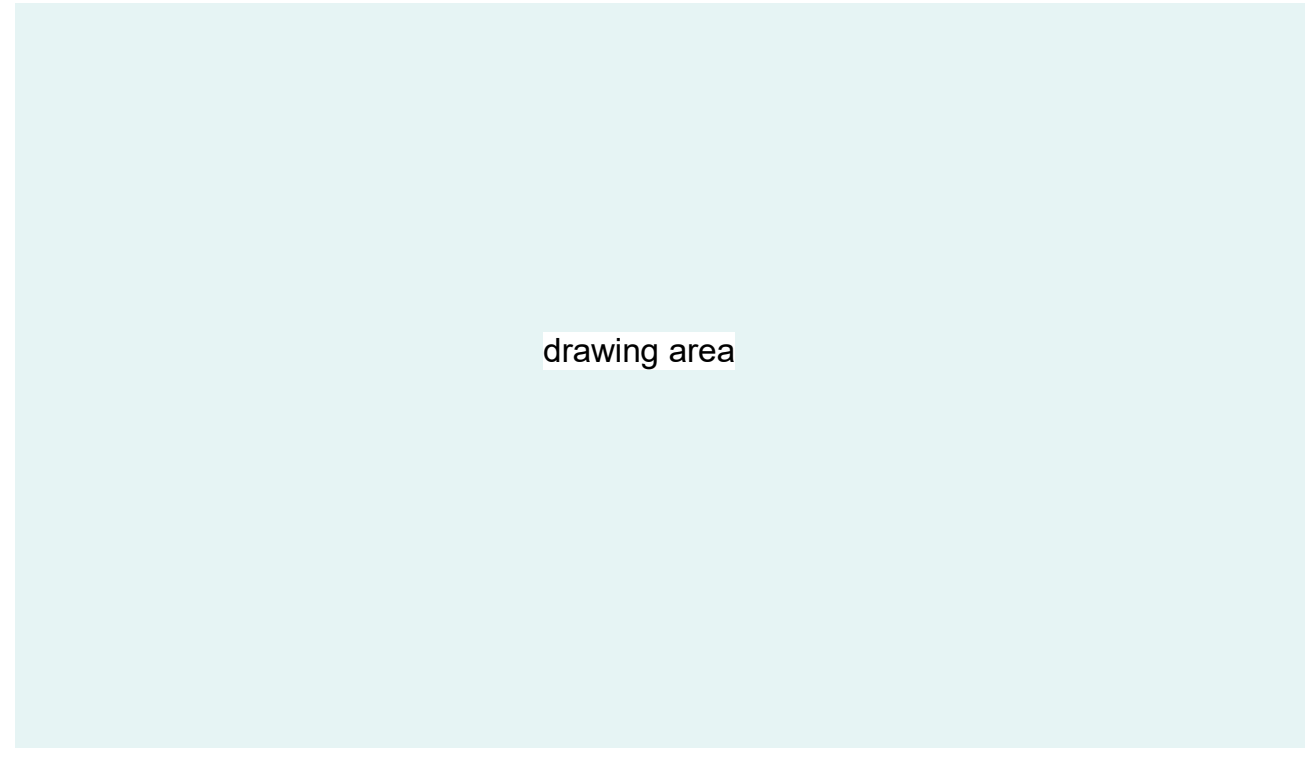
CAN YOU SEE THE AIRPLANES? THE ADJACENT SAMPLES SHOW THREE DIFFERENT LEVELS OF SHADING. SETTINGS FOR VIEWING AND PRINTING DRAWING CONTENT ARE OPTIMIZED WHEN ALL THREE PLANES ARE VISIBLE. THIS GUIDANCE IS PROVIDED FOR REFERENCE ONLY.



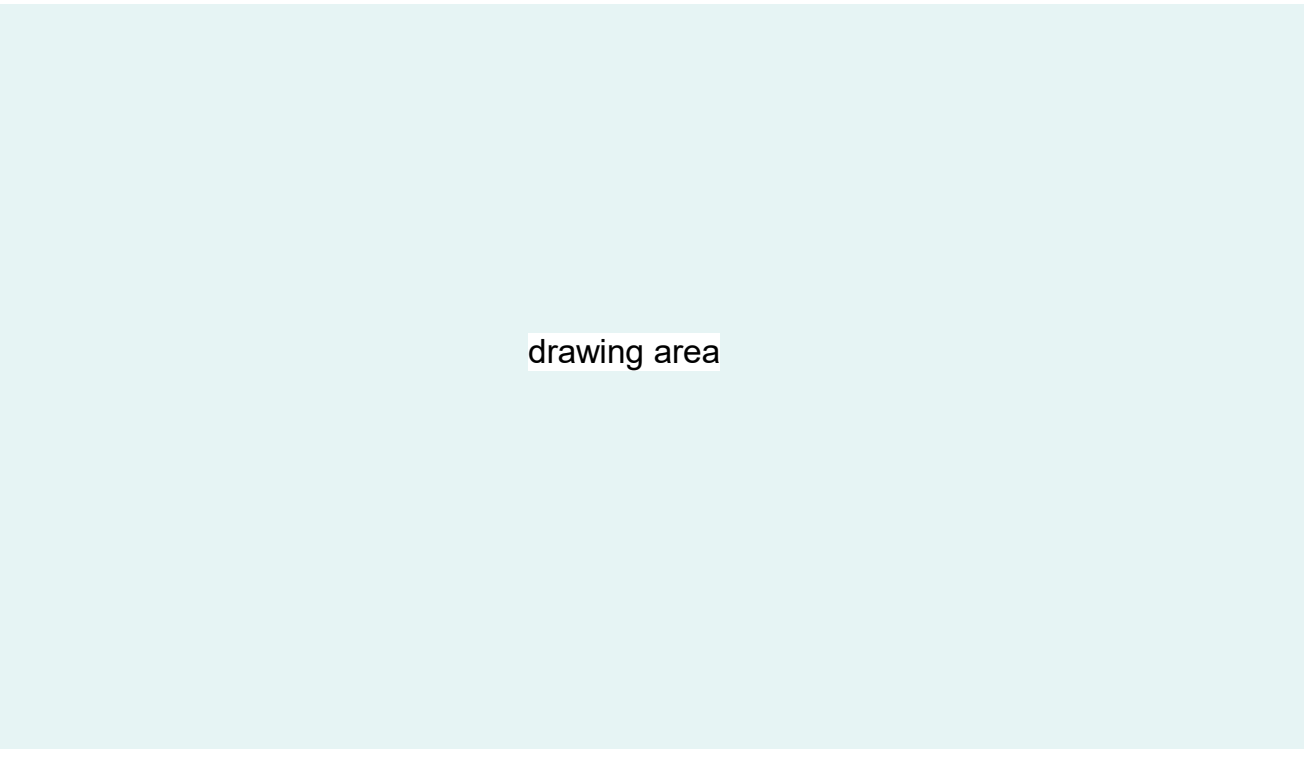
1 DRAWING NAME  
1/8" = 1' - 0"



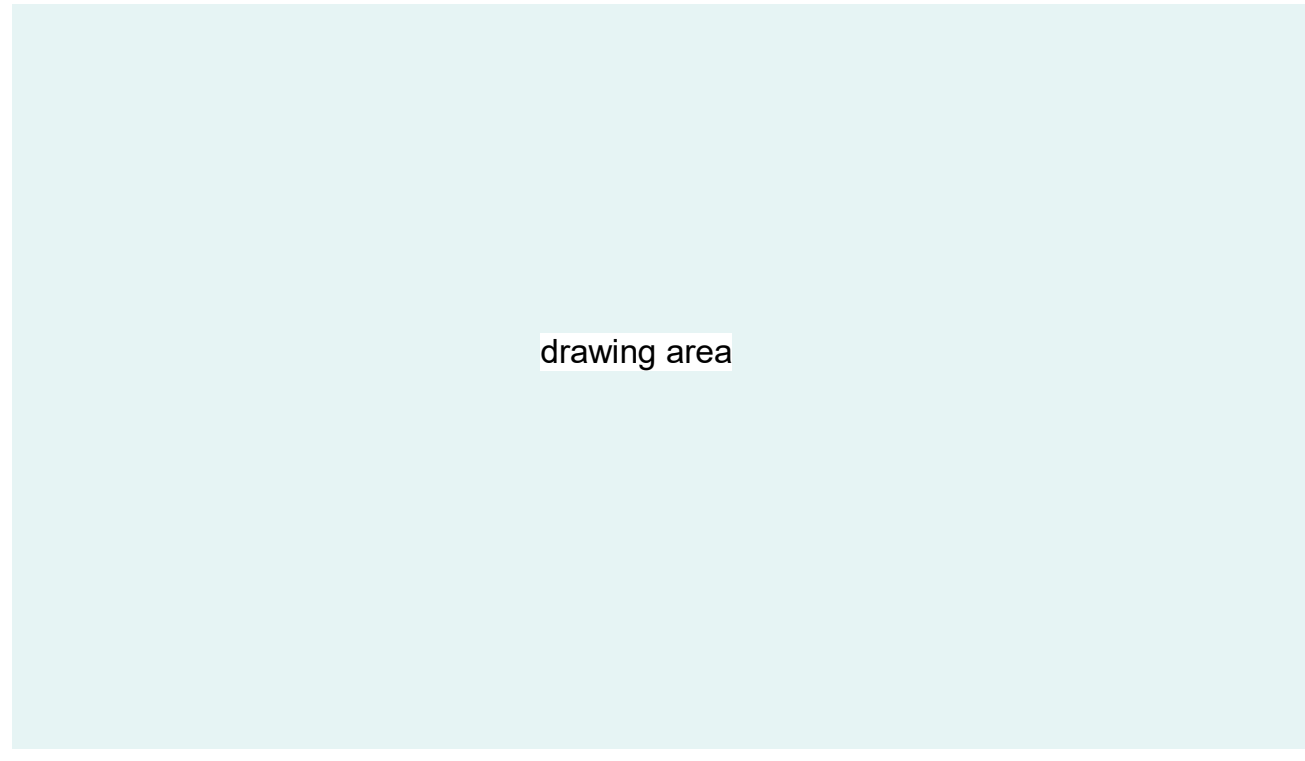
2 DRAWING NAME  
1/8" = 1' - 0"



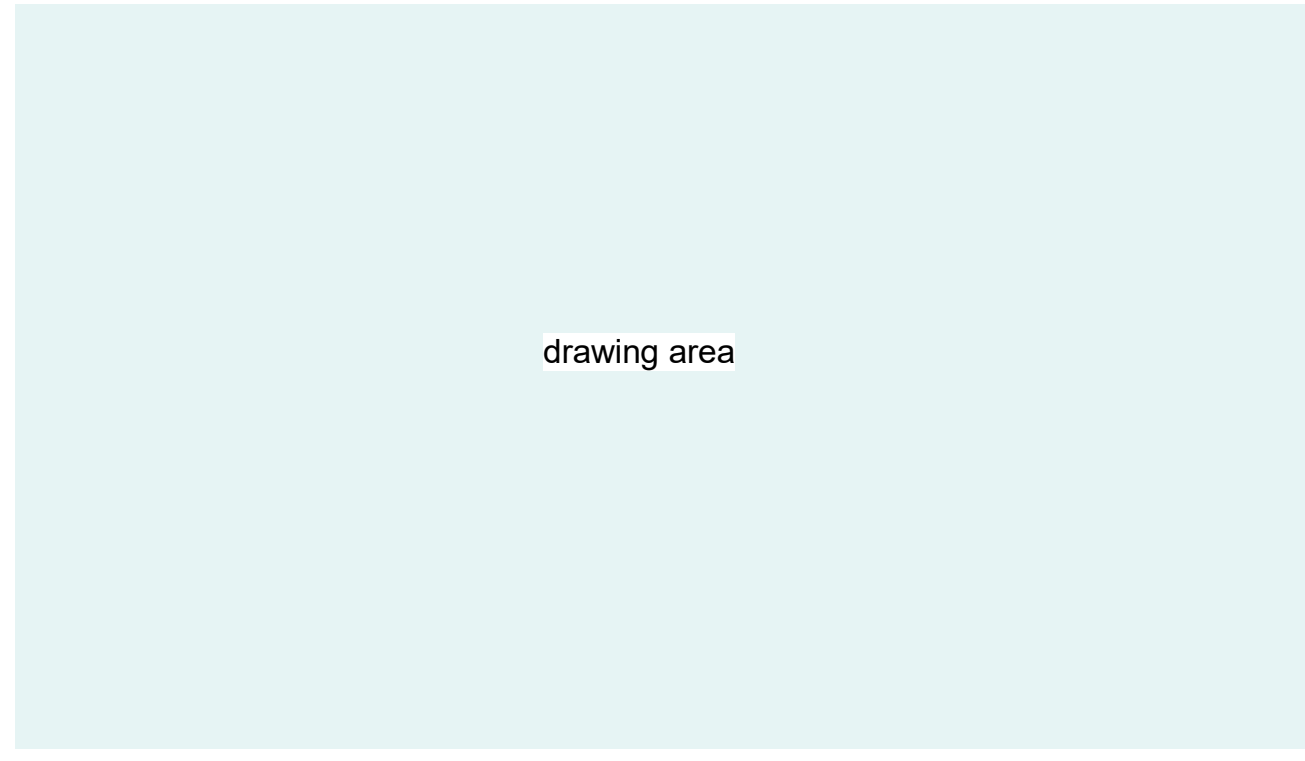
3 DRAWING NAME  
1/8" = 1' - 0"



4 DRAWING NAME  
1/8" = 1' - 0"



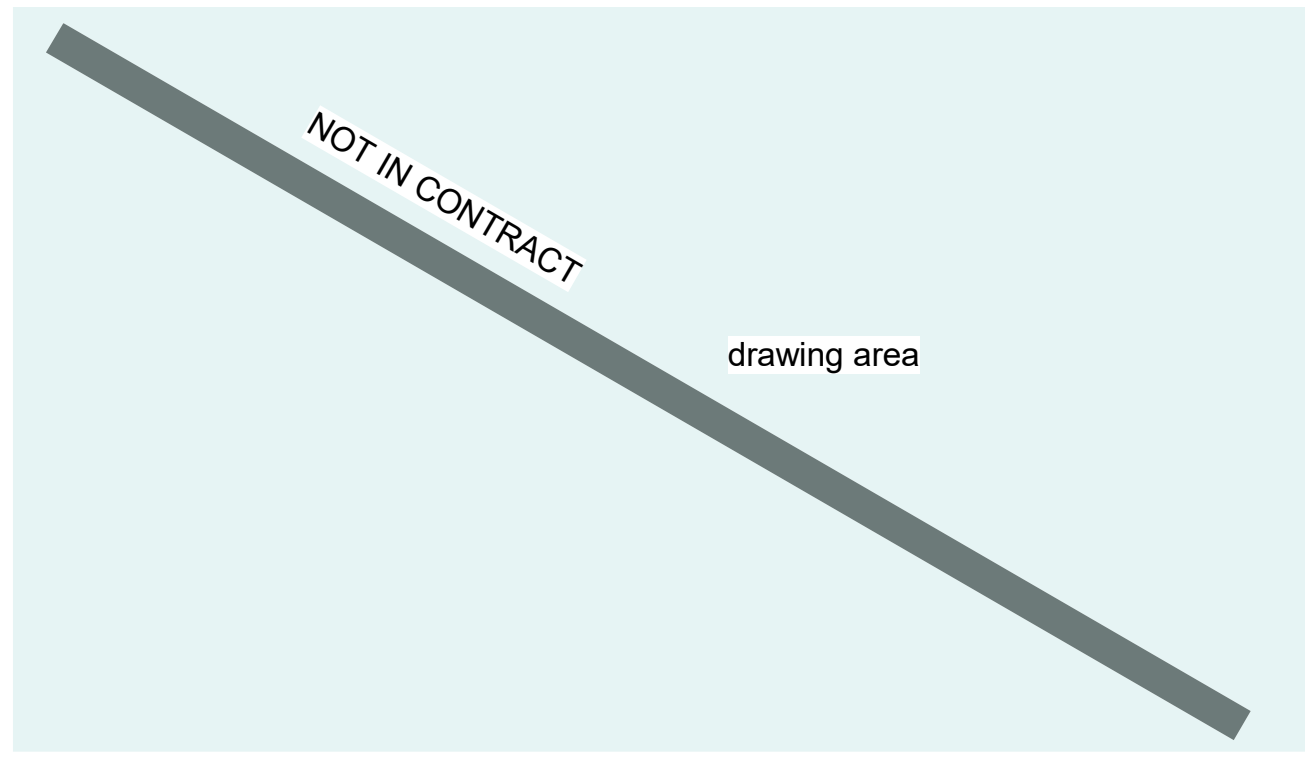
5 DRAWING NAME  
1/8" = 1' - 0"



6 DRAWING NAME  
1/8" = 1' - 0"



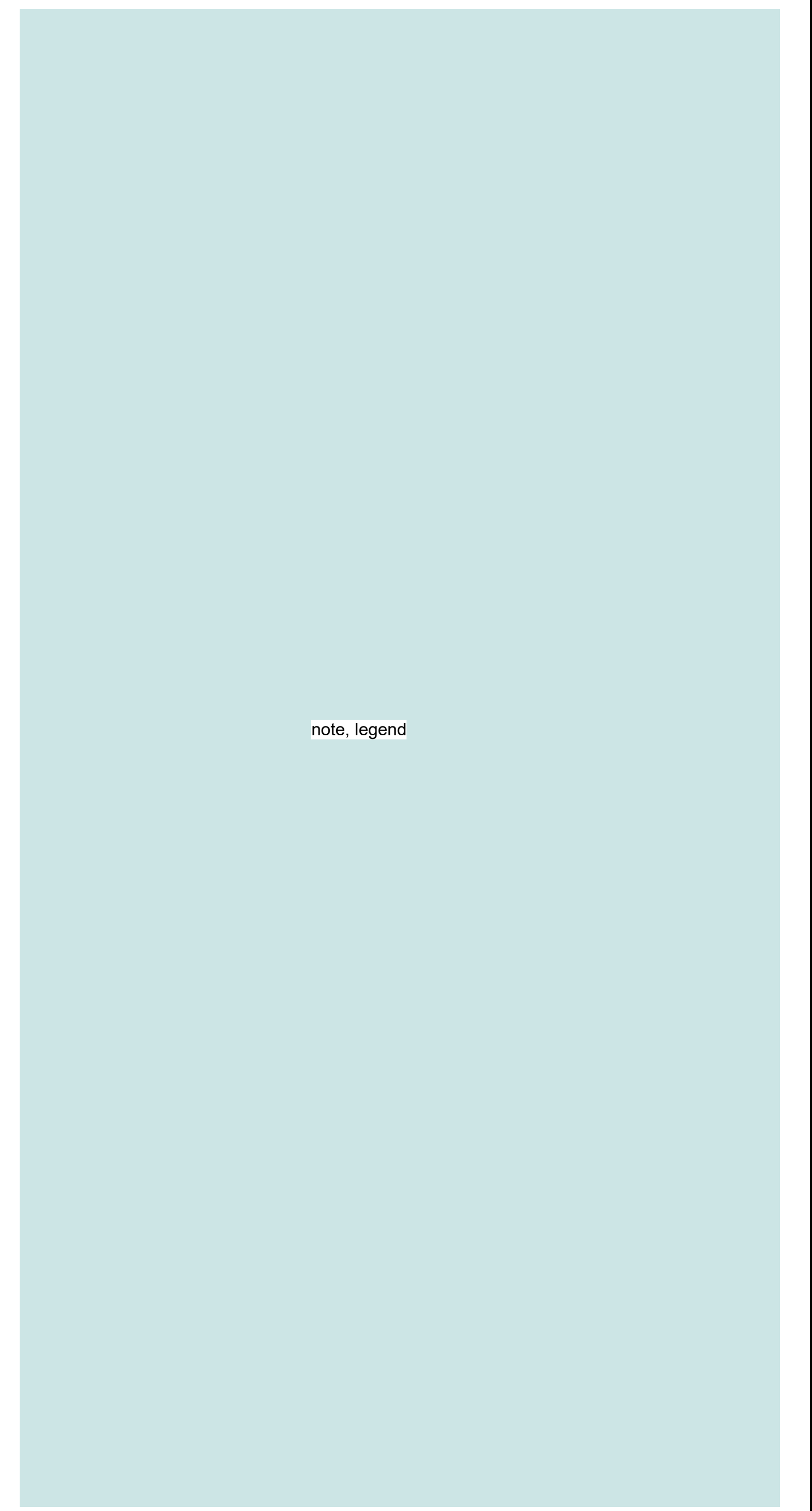
7 DRAWING NAME  
1/8" = 1' - 0"



8 DRAWING NAME  
1/8" = 1' - 0"



9 DRAWING NAME  
1/8" = 1' - 0"



NO.	DATE	BY	REVISIONS	NO.	DATE	BY	REVISIONS

**PORT OF PORTLAND**  
*Possibilities in every direction since 1897.*

2022ZGEN      #####  
DESIGN NUMBER      PROJECT NUMBER

FACILITY NAME  
PROJECT NAME  
SAMPLE SHEET - INTERIOR DETAILS

SUBMITTED BY	AMANDA COLEMAN
DESIGNED BY	A.SHORT
DRAWN BY	A.SHORT
CHECKED BY	D. KEARNS
DATE	MONTH YYYY
SHEET NO.	TYPE AA
DRAWING NO.	DISC. SHT. NO.
PDX YYYY-####	A9.01



